

---

Campus includes:

EmeryStation East – 5885 Hollis Street

EmeryStation Greenway– 5800 Hollis Street

EmeryStation North -5980 Horton

EmeryStation 1 – 5858 Horton

Heritage Square – 6121 Hollis Street

# WAREHAM COLLECTION

# All Together Now

- Frederick Gelb
- Brass Sculpture
- 2012
- EmeryStation Greenway Building, Corner Plaza



Since being diagnosed with cancer and after his successful recovery, the artist realized his passion to sculpt. In only a few years, he has finished numerous fascinating sculptures. Inspired by The Beatles often used phrase *All Together Now*, Frederick Gelb, has created a dynamic inspirational sculpture of four powerful figures in fluid interacting, cooperative motion. All of the figures are either clasping hands, arms or shoulders to provide mutual support, while the entire group seems to be moving in perfect unison in a singular direction. The artist has created a statement for the finest hopes, dreams and goals of humanity, striving together as one to enhance the progress of all.

Walking Map Site #12

# Aquatic Circus and Angel's Hand Fountain Sculptures

- Gregory Hawthorne
- ½ " corten steel, sand-blasted finish and acid-etched
- 2008
- 5885 Hollis Street



Angel's Hand



Aquatic Circus

Walking Map Site #11

# Eclipse 7

- Gregory Hawthorne
- Patinated bronze and stainless steel with satin finish
- 2005
- 5858 Horton Street



Walking  
Map  
Site  
#19

Artist, entrepreneur, and trailblazer in a dynasty of successful creative talents, Greg Hawthorne is a painter turned sculptor who founded the Hawthorne Galley in Big Sur. Fundamental creative influences came early. "When I was growing up, my father was an architect and also into furniture," says Hawthorne. The family had Herman Miller pieces and a library full of books on Charles Eames and Frank Lloyd Wright. Hawthorne turned to the aesthetics of those leading figures in developing the ergonomics of his pieces. Hawthorne's provocative and ebullient imagery is the expression of his observations of people, current events, and personal interests. He believes art to be "a continuous process, influenced by all aspects of a changing society.."

# Santa Lucia Rock Fountain

- Gregory Hawthorne
- Granite boulders
- 2005
- 5858 Horton Street



Gregory Hawthorne executed a very boldly unadorned treatment for the “Santa Lucia Rock Fountain.” Hawthorne has more than fifty water installations constructed from various materials and believes he has only just started to explore the rich potential of designs and material possibilities. Hawthorne’s provocative and ebullient imagery is the expression of his observations of people, current events, and personal interests.

Walking  
Map Site  
#19

# Blues Tower

- Michael Gustavson
- Raku ceramic sculpture
- 2012
- 5858 Horton Street

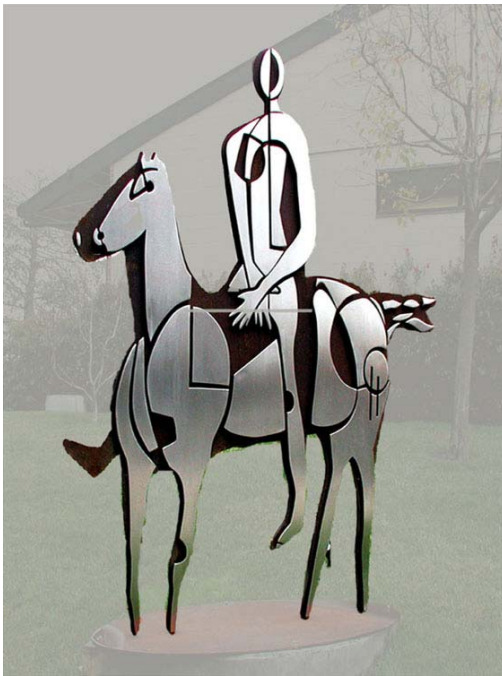


Michael Gustavson's work is very unique in that he uses the traditional process of raku and has expanded it by way of his own technique. The glazes he uses are textural and often appeal to one's senses causing the viewers to immediately want to touch the work. This comes as no surprise to Michael as he always emphasizes surface quality and texture. The wall pieces are glaze paintings with fragmented edges giving it both negative and positive space. The vessels are thrown on the wheel and then hand stretched to create a sense of the human figure. Each vessel gives the appearance of a torso having no head but having the grace of a dancer...truly these works of art are exciting to touch, look at, and admire!

Walking Map Site #19

# Commuting

- Gregory Hawthorne
- Stainless steel and acid-etched steel
- 2005
- 5980 Horton Street



Gregory Hawthorne's work encompasses a remarkable variety of mediums from paintings to outdoor acid-etched sculptures and furniture that is really functional art. "Commuting," very Picasso-esque in style, is a dramatic yet humorous anachronism as the figure of the mounted horseman faces the Amtrak train station and the I-80 freeway.

Walking Map Site #21

# Platter 143

- Max DeMoss
- Cast bronze with silver on granite
- 2005
- 5980 Horton Street



Born in Southern California, the sculptor Max DeMoss was educated at Claremont Graduate School. DeMoss is frequently commissioned for artwork in indoor and outdoor, private and public spaces and has developed a specialization in sculpture for sacred spaces. DeMoss often employs the fragmented form and his subjects range from the figure to biblical allegory, and from the abstract to narrative. His work at The Cathedral of Our Lady of the Angels in Los Angeles has brought him national acclaim and his sculpture also graces Catholic churches in Rancho Santa Fe and Laguna Hills in California, as well as in Scottsdale, Baton Rouge, and Fort Worth.

# Seashell Tower and Pacific Blue

- Michael Gustavson
- Raku ceramic sculpture
- 2012
- 5885 Hollis Street



*“Clay has been an art form that man has used since the beginning of time. Every culture that has been discovered through archeology has a historic record of uses for clay. From utilitarian to sculpture this ancient historical record has always intrigued me... Clay itself has a lot to do with my aesthetic viewpoint. The last 30 years I have used the forms that I create, whether vessel or wall slabs, as a vehicle to express myself as a painter using glaze as my paint. My most recent works are a series of large hand built tectonic forms. With these forms I will continue to explore and express the language of clay...”*

Walking  
Map Site  
#11

# Nobel Wall of Fame and Buddah Sculpture

---

- Chris Lattanzio
- 3-D Line Sculpture
- 2007
- 5885 Hollis Street

“Like a child’s playground, creativity is a place of peace, joy and freedom. But too often, we build up walls around it that keep us locked out—and its secrets and treasures trapped within” says Chris Lattanzio. Lattanzio received a degree from Baylor University, worked in New York surrounded by the walls of a standard cubicle. “But I never found that peace or joy inside those walls.” It was only by returning to my childhood that he rediscovered the activity that gave him peace: the creation of art. “The more I opened myself to the joys of my childhood, the more I came to realize that the lines on this path lead me to creating the best that I have out of everything that I am.”



# Floral with Bull

---

- Kharlene Boxenbaum
- 2004
- Oil on Canvas
- EmeryStation 1 – 5858 Horton St



# A Night at the Opera; Moon Party; Dancing by the Lake

---

- Gregory Hawthorne
- 2011
- Oil on Canvas
- EmeryStation 1 – 5858 Horton St



# Primary Dream II

---

- Michael Gustavson
- 2011
- Raku ceramic vessel
- EmeryStation 1 – 5858 Horton St

Walking  
Map Site  
#19



# Fog and Sand

---

- Kharlene Boxenbaum
- 2004
- Oil on canvas
- EmeryStation North – 5980 Horton Street

Walking  
Map Site  
#21



# Standoff

---

- Kharlene Boxenbaum
- 2004
- Oil on canvas
- EmeryStation North – 5980 Horton Street



# Westinghouse Building Images

- Kim Harrington
- 1989
- Giclee print
- Emery Station North – 5980 Horton Street



# Lagoon

---

- Kharlene Boxenbaum
- 2004
- Oil on canvass
- EmeryStation North – 5980 Horton Street



# Sierra Stream 1-3

---

- Merle Axelrod Serlin
- 2001
- Woven Fabric
- EmeryStation North –  
5980 Horton Street

Walking  
Map Site  
#21



# Emeryville circa 1937

---

- Unknown
- 1937
- Archival sepia photograph
- Emery Station East, 5885 Hollis Street



# Union Oil

---

- Unknown
- 1927
- Original Signage
- Emery Station East, 5885 Hollis Street

Walking  
Map Site  
#11



# What Would You Follow If There Were No Lines On Your Road

---

- Chris Lattanzio
- 2007
- 3-D Line Sculptures
- Emery Station East, 5885 Hollis Street - west Entrance off Peladeau

Walking  
Map Site  
#11



# Untitled

---

- Meyer Parry
- Copper
- 1987
- Heritage Square –  
6121 Hollis Street



# Wing Triangles 5 & 6

- Max DeMoss
- Bronze with silver on granite
- 2004
- Heritage Square - 6121 Hollis Street



Light is an animating force from the surfaces of this piece through the artist's use of bronze patinas and an application of silver. An early exposure to Classical Greek and Roman art has found an echo throughout the artist's career. In his explorations of the mysteries of the ancient art of bronze casting he uses the centuries-old method of "lost wax" casting, where his work comes alive specifically because each piece is broken open, thus letting in light and space, and subtly informing the viewer of its origins... "The mass entertainment of the Renaissance was painting, when art audiences were captured by the artist's use of line," says DeMoss. "In my work I introduce the line to reflect the process of creation, and to add thoughtfulness and depth to each piece."

# Series of Art Works by Margo Reis

2007

Mixed media

Heritage Square – 6121 Hollis  
Street

Headlands



Sunset



Greener  
Pastures



Distant  
Ridge



# Series of Art Works by Margo Reis

2007

Mixed media

Heritage Square – 6121 Hollis  
Street



Around the Bend



Small Grove



Don't Fence Me In

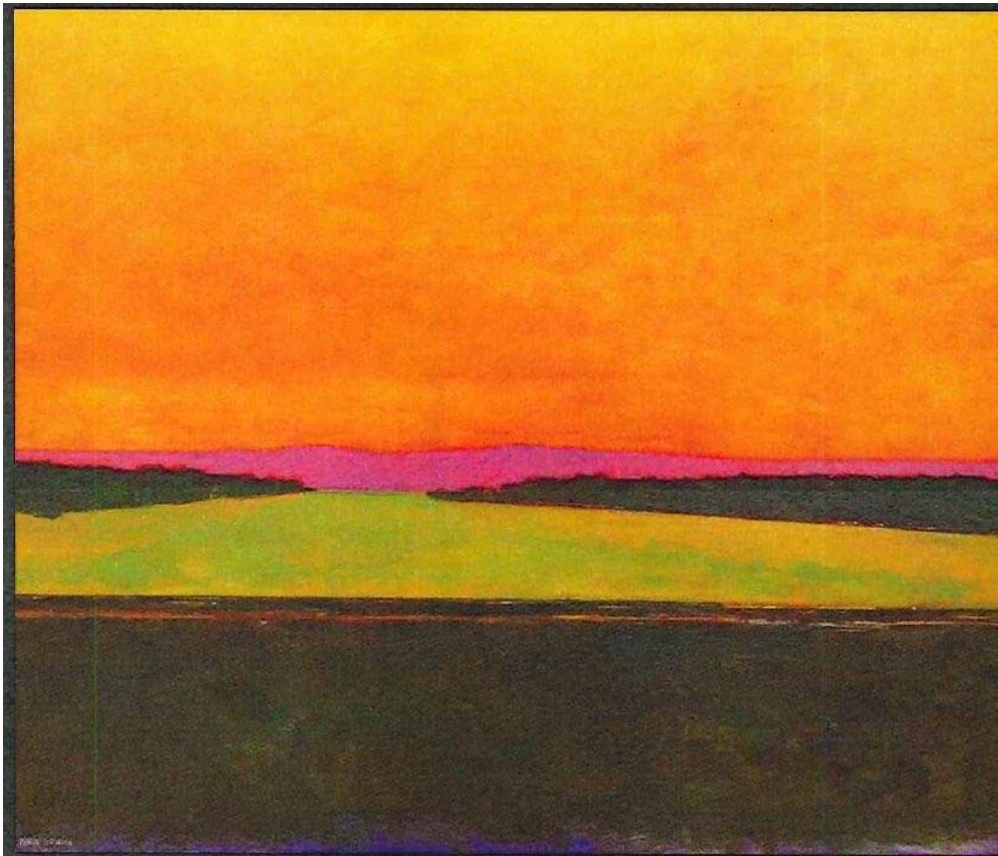
# Elephant Parade, Tiger Island, Circus Girl & Goat

- Barbara Leventhal-Stern
- Woodcuts
- 1998
- Heritage Square – 6121 Hollis Street



# Magenta Ridge

---

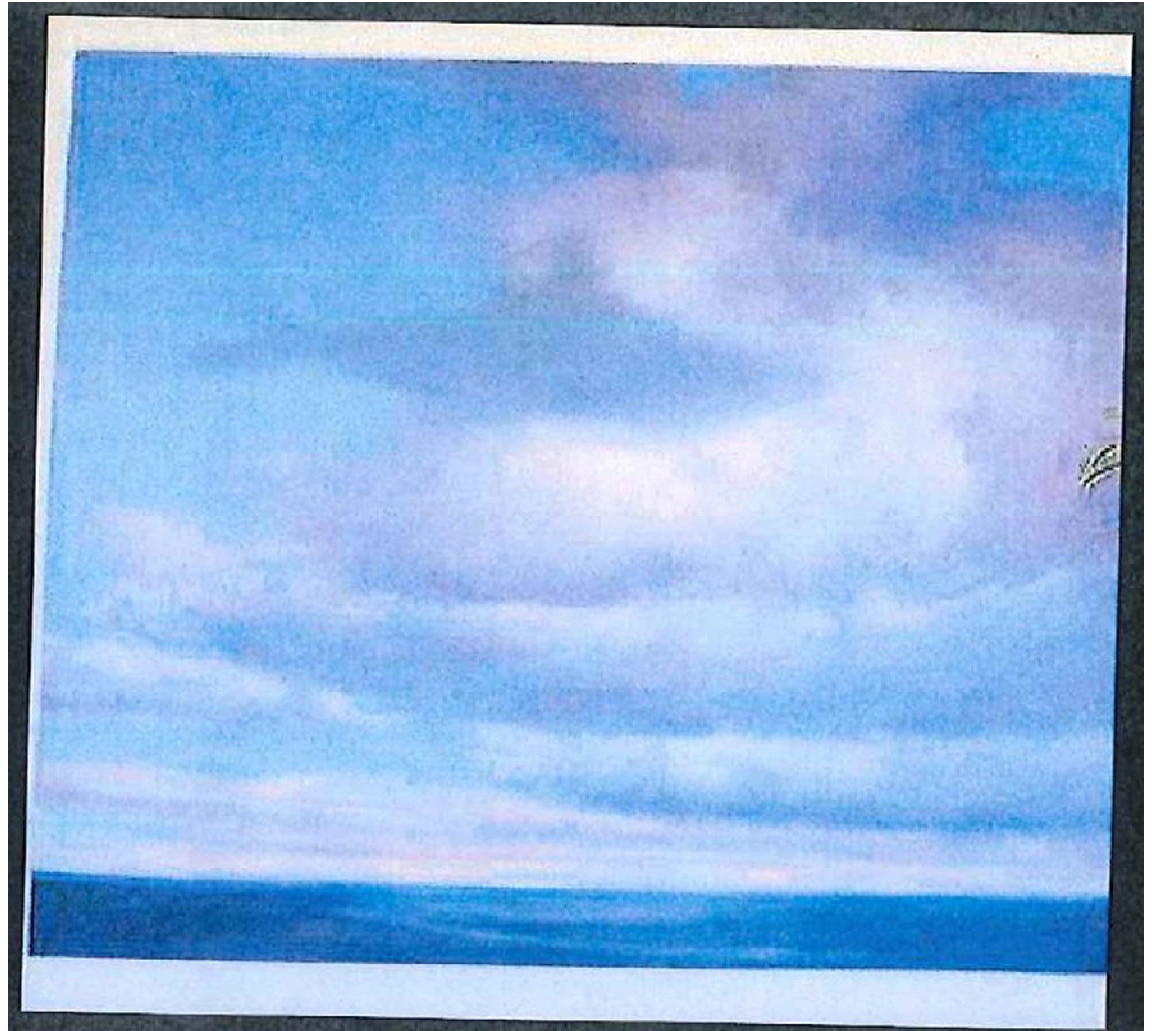


- Mark Bowles
- 60x70" painting depicting California mountain ridge
- Acrylic on canvas
- Heritage Square- 6121 Hollis St.
- [mark@markbowles.com](mailto:mark@markbowles.com)
- 916-296-7778

# Big Sky

---

- Victoria Mimiaga
- 72x60" painting of sky over pacific ocean
- Oil on canvas
- Heritage Square- 6121 Hollis St.
- [vlmimiaga@yahoo.com](mailto:vlmimiaga@yahoo.com)
- [www.victoriamimiaga.com](http://www.victoriamimiaga.com)



# Untitled – 3 paintings

---

- Michael Murphy
- 2003
- Oil
- Heritage Square – 6121 Hollis Street



# Various Giclees by Dionisio Ceballos



- 12 limited edition Giclees of various size
- Interior corridors and in the Inner Courtyard
- One piece, Triptych of the Land, is a 3-piece work measuring 36x108. All prints framed.

[www.dionisio.com.mx](http://www.dionisio.com.mx)