

RCCD ICONIC PUBLIC ART

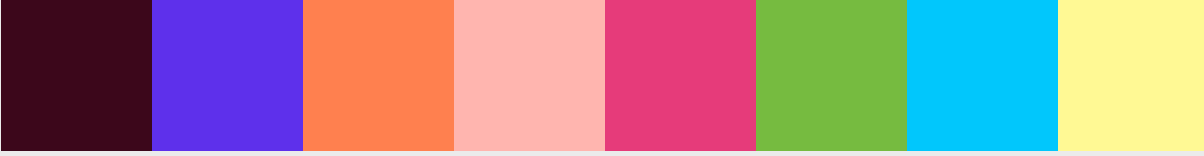
- INDEX
- TASK
- INTRO
 - The Team
 - Relevant Background
- WORKFLOW
- LOCATION
 - Pros of Location
- CONCEPT
 - Theme
 - General Concept
 - Mediums
 - Anamorphic
 - Etching
 - Plants
- MOCKUPS
- DETAILS
 - Maintenance
 - Lighting
- THANK YOU



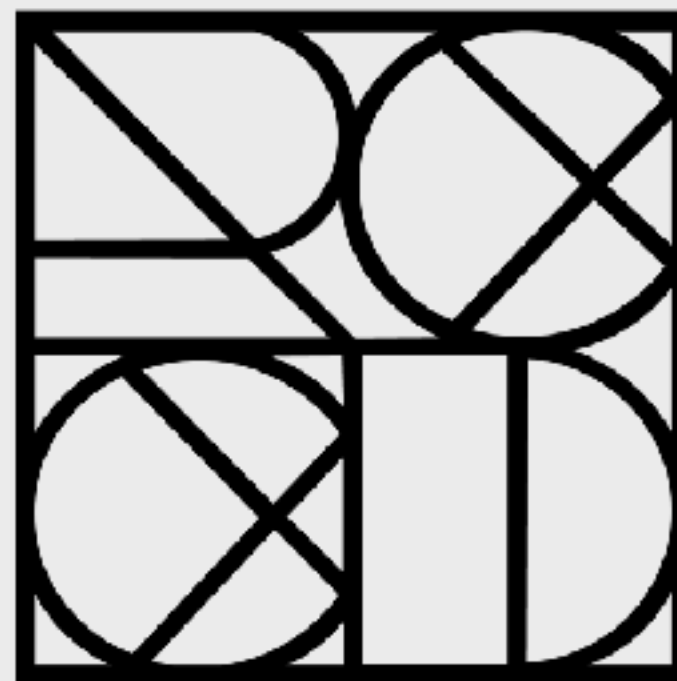


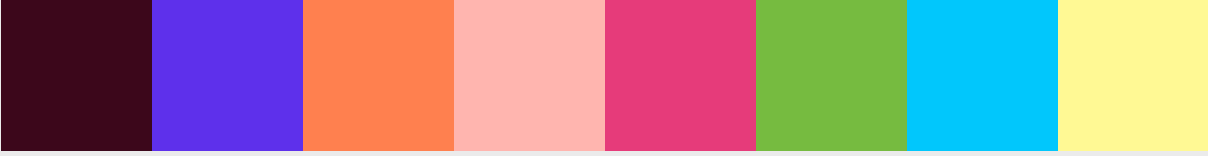
Feature Sculpture

A significant part of our scope involves creating a piece of permanent public art. We proposed a "Branded Concrete Relief Mural," with potential opportunities for incorporating plant elements or projections. The following slides outline our initial plans for bringing this vision to life.



**Our goal is for the artwork to serve as both an iconic,
contemporary piece and an identifiable element of the RCCD.**





OUR LEADERSHIP TEAM

ABG ART GROUP



E. TRENT THOMPSON

Director of Creative Operations



SORELL RAINO-TSUI

Director of Strategy and Partnerships



ERICA ENRIQUEZ

Director of Events

Studio ABG

Studio ABG is “Elliot” Trent Thompson and “Xiao-Rui” Sorell Raino-Tsui, an art and design duo with backgrounds as visual artists and creative directors. Our combined expertise allows us to create works and experiences that tell stories in unexpected and distinctive ways.

Studio ABG exists simply to develop and produce cutting edge art. Our focus, to merge the storytelling of our contemporary works with cutting edge applications for public art.

The heart of ABG is collaborative and through years of combined support of the artistic visions of our community we have developed a voice of own. Studio ABG is what separates us from your standard Creative Agency, led by artists, we are creative to our core.

“Xiou Rui” - Sorell Raino-Tsui

“Elliot” - Trent Thompson

[OUR CV AND PORTFOLIO](#)





Location 2

Preferred Location

HOLLIS & POWELL

APPROVED ARTWORK LOCATION



POWELL

RCLD PLAGUE

HOLLIS

NEW APPROVED
STREET
IMPROVEMENT





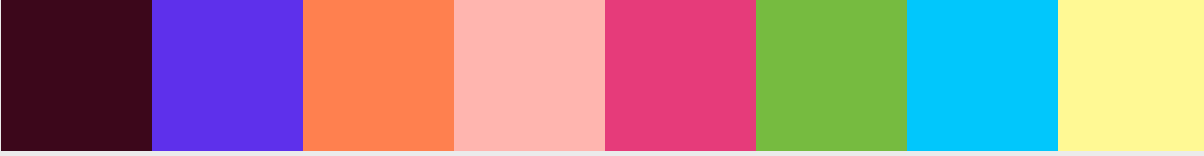
Special Circumstances

Sustainable techniques:

- Water-efficient spray, drip emitters, irrigation controller and rain sensors.
- Plantings as infiltration areas will be utilized to cleanse storm and permeable pavers will be used to drain.
- Recycled glass and recycled lumber will be used in the project materials.
- Recycle bins will be on-site
- Existing materials from the site will be reused
- All landscaping will include California-tolerant, non-invasive trees, plants, and ground cover.
- Paving and hard surfaces will be minimized in order to maximize storm water infiltration.
- Bicycle racks will be installed to encourage alternative modes of transportation.
- Energy efficient lighting
- Micro turbine Windmill will be installed to offset the site's lighting and energy demand.

If so, then there should be no issue with removing the windmill and replacing it with a sculpture. If you have any questions, please let me know.

•



Title: Rotten City Builds Fertile Ground

A Combination of Concepts





Seamless **MIXED MEDIUM**

The Sculpture will appear to be made primarily of concrete but will have a variety of diverse mediums throughout the piece representing Emeryville

Diverse makers. All the Mediums would be permanently durable materials which could include metals, redwoods, tiles, bricks etc...



Dynamic **ETCHING**

The sculpture will feature floral patterns that are etched, embossed, painted, or laser-cut into the piece. This interpretation of 'Fertile Ground' will showcase botanical designs emerging from predominantly industrial materials. It's both a play on words and an aesthetically strategic choice, creating balance with the surrounding buildings in Emeryville.



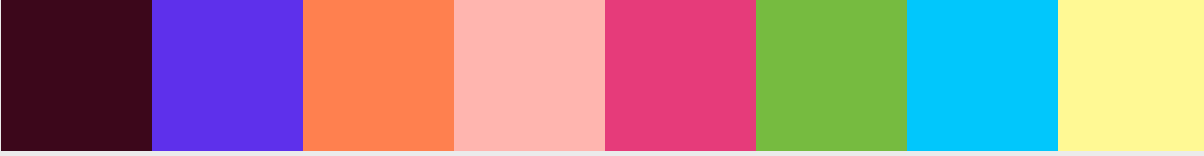
Obviously **Plants**

The sculpture will be intended as a feature that will continuously foster organic growth. We will partner with local experts to curate easily maintainable plants to be a part of the sculpture.

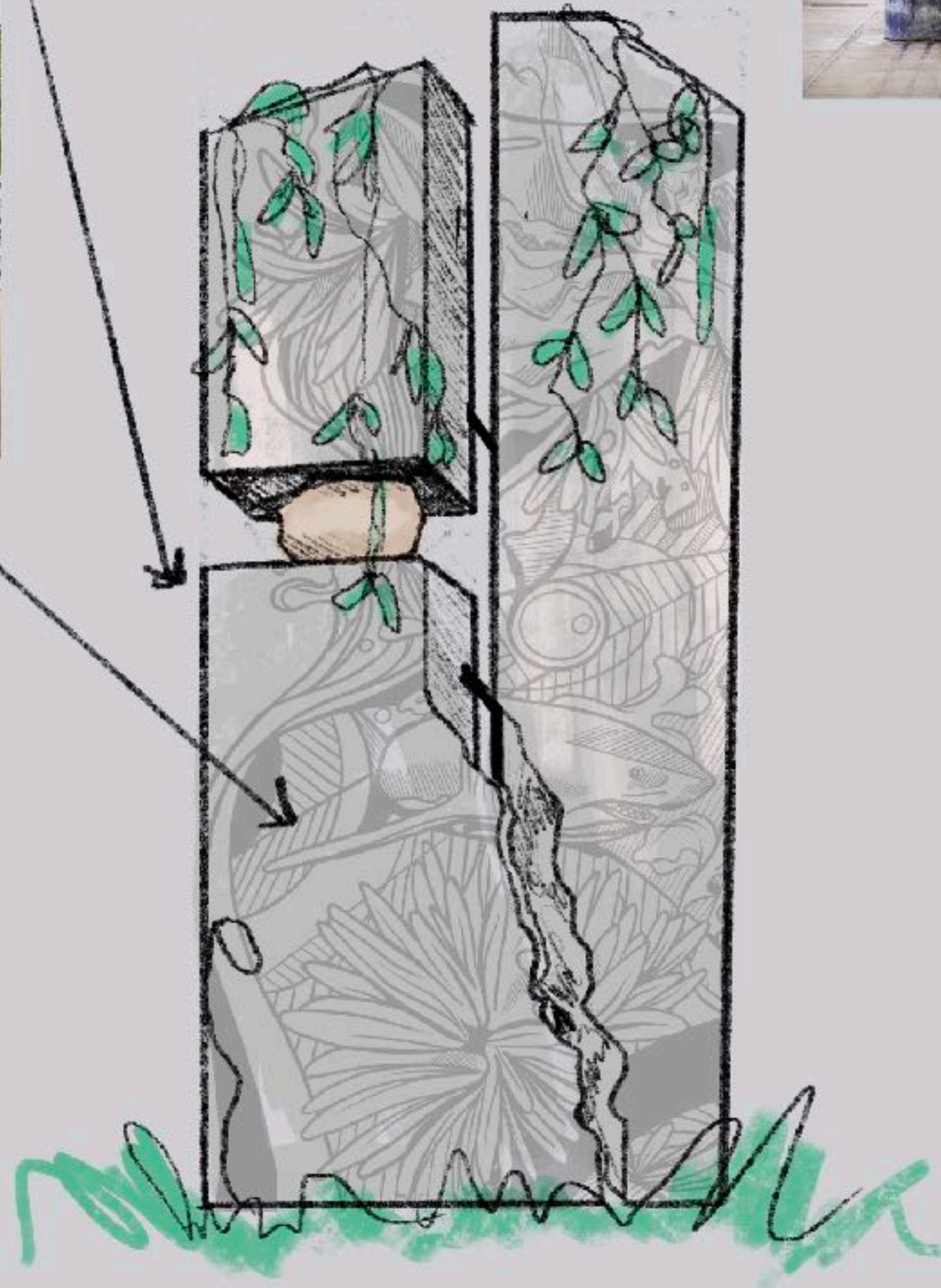
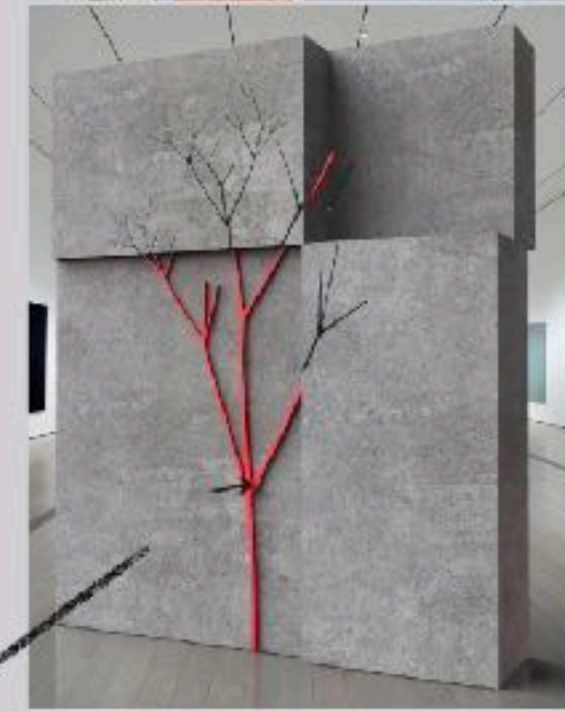


Maintenance **Plan**

The sculpture made out of durable exterior materials easy to maintain, hard to break, weather resistant etc..The plan will be adjusted based on selected materials.



CONCEPT



BACK



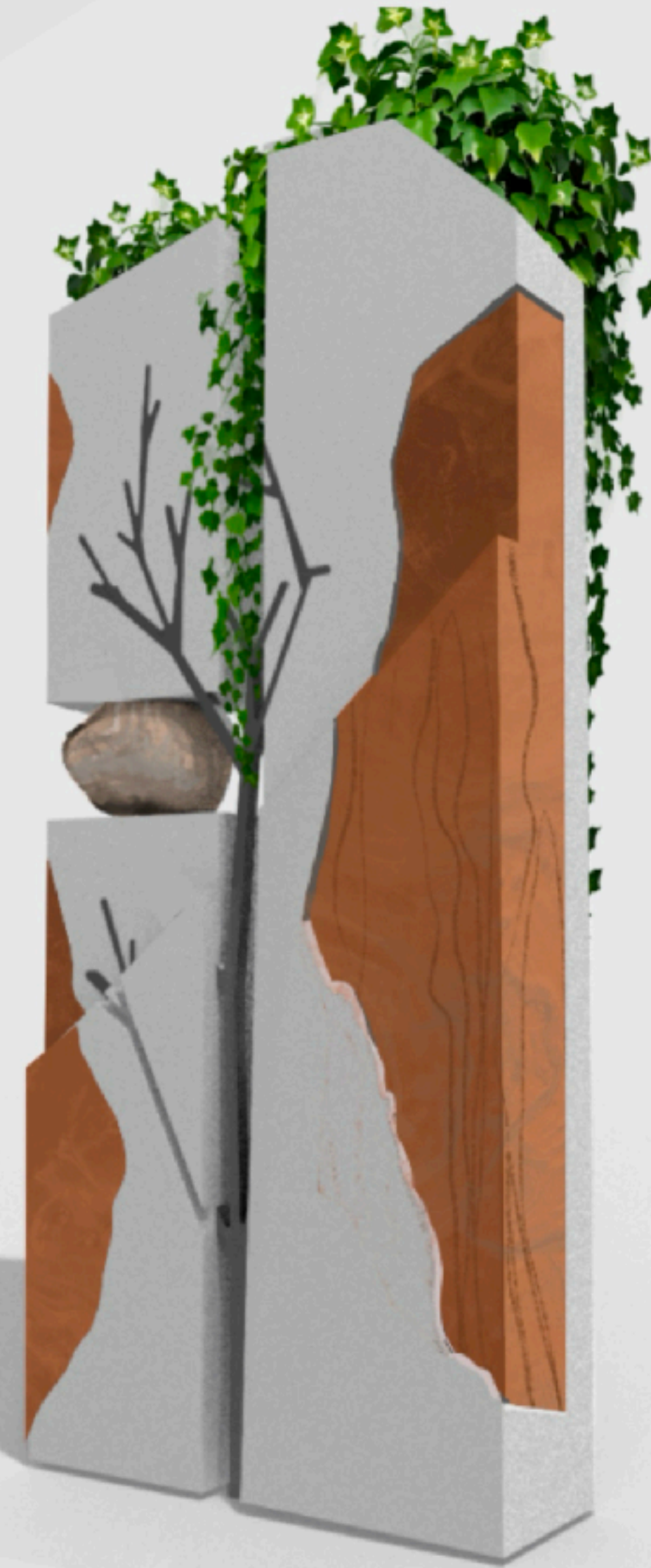
FRONT



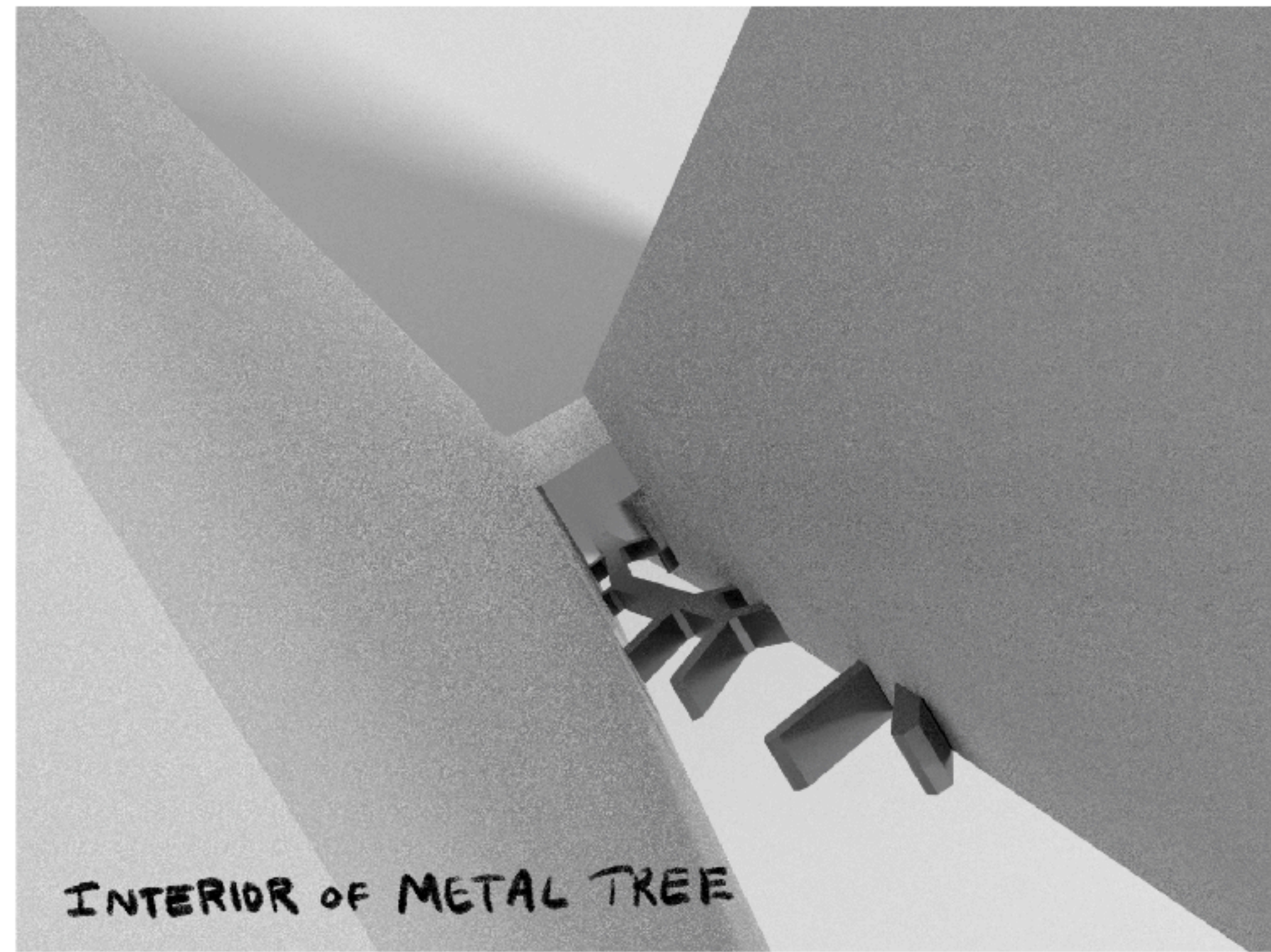
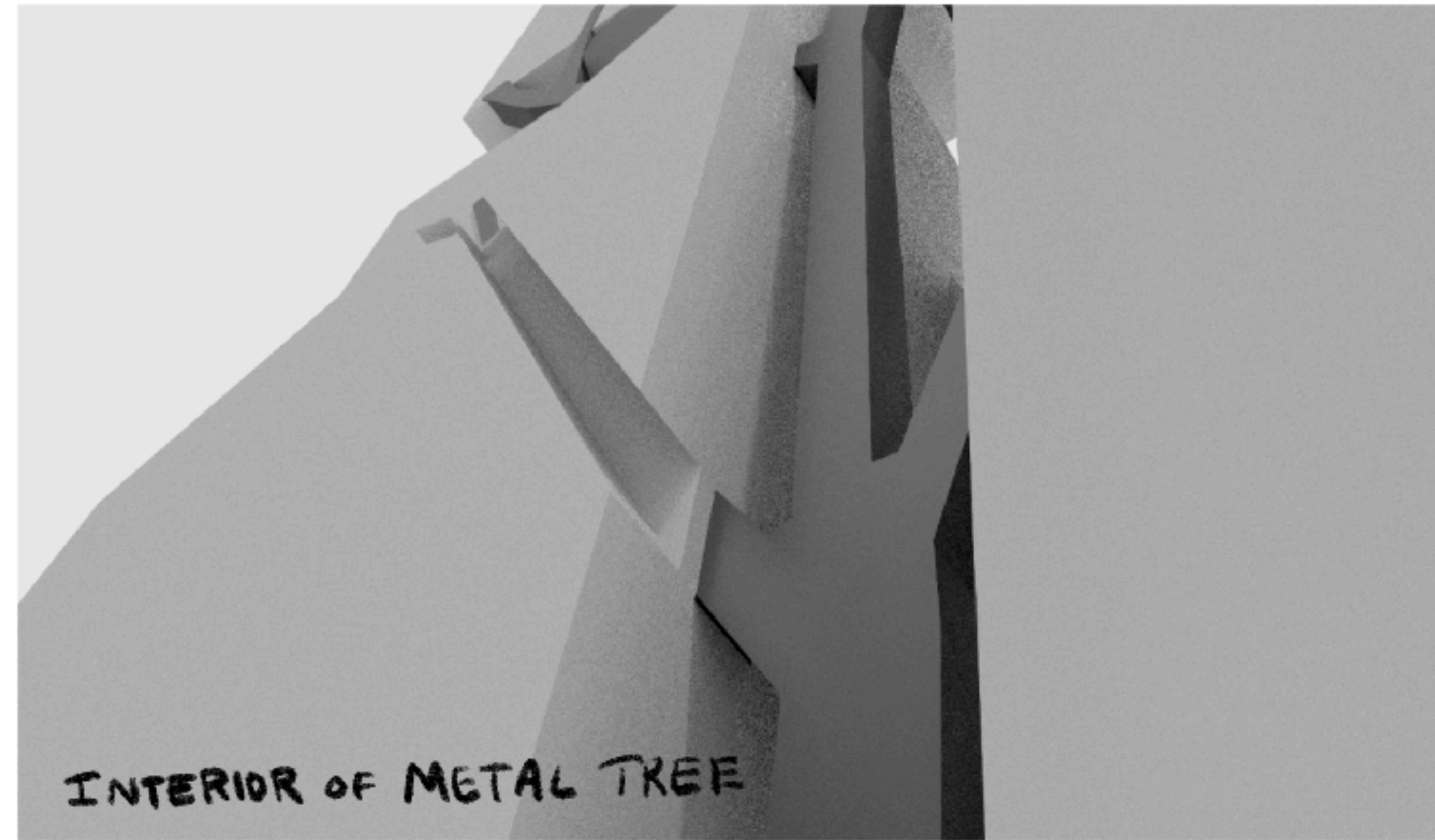
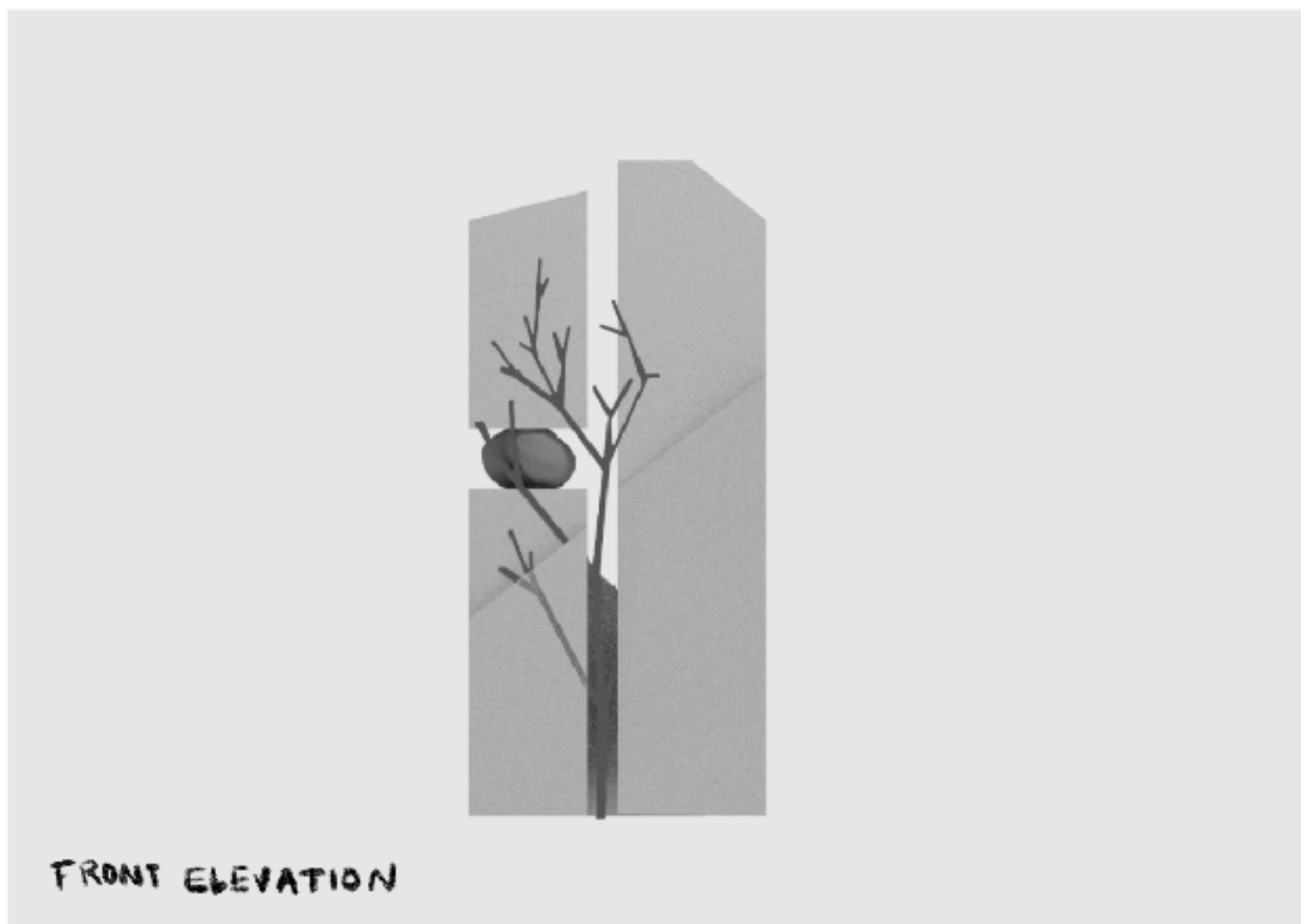
DESIGN FOR BACK - PEBBLE MOSAIC



BACK



FRONT



SCALE & FRAME

METAL STRUCTURE

REINFORCED POLE

POURED GROUND PLATE

12'

5'