



# Purchase Award

2006 - 2022

EMERYVILLE ARTISTS SELECTED BY PANEL FROM THE EMERYVILLE CELEBRATION OF THE ARTS SHOW

# Purchase Awards

22 artists with 31 works. Two works are made up of 12 panels or pieces and one is of 47 pieces, resulting in a total of 95 pieces of works between the following locations:

1333 PARK AVENUE, CITY HALL

2449 POWELL STREET, POLICE STATION

4231 SALEM STREET, SENIOR CENTER

- **CITY HALL (MAP LOCATION #15)**
- **SENIOR CENTER**
- **POLICE STATION**



# Haiku 4

1

- ▶ Michael Murphy
- ▶ Acrylic on canvas
- ▶ 2009
- ▶ Old City Hall



Rendered in black, white and gray tones, the artwork appears as an abstract image when viewed up close but becomes a mysterious, intriguing landscape when viewed from afar. The painting entices the viewer to approach closer, and then to move further away in order to experience the subtle changes in light, texture, and surface patterns.

# Silver Seedy Nocturne

2

- ▶ Therese Lahaie
- ▶ Glass, stainless steel, Delrin, fabric, low RPM motor
- ▶ 2006, Restored in 2022
- ▶ City Hall Lobby



With light projected through glass onto a slowly moving scrim and casting shadows that expand and contract, the work evokes the ebb and flow of tides or the rhythms of heartbeat and breath.

This kinetic mixed media sculpture, is one of a series of Lahaie's work that seek to connect viewers to the natural elements of light, water, and air.

Lahaie adopted the "Nocturne" series name from J.M. Whistler's eponymous paintings. Her use of planes of muted color is a response to his Nocturnes, and the slow repetitive movements, shifting shadows, and reflections to be found in Lahaie's sculptures become a contemporary manifestation of the poetic atmosphere of Whistler's dusk-time landscapes.



# Verdure

3

- ▶ Ana Lisa Hedstrom
- ▶ Poly felt, transfer printing
- ▶ 2008
- ▶ City Hall Lobby
- ▶ [www.analisedstrom.com](http://www.analisedstrom.com)



“I think of fabric as a conversation,” proclaims Hedstrom. “It can be subtle, bold, witty, seductive.” The artist is known for her use of shibori, the ancient Japanese art of resist dyeing. By binding, stitching, and folding fabrics with unique variations on traditional methods, Hedstrom creates a myriad of intricate patterns in cloth, which may be viewed as a language or script. She specializes in arashi shibori, a technique that involves folding and wrapping fabric around a tube before placing it in a dye bath. She creates work with a sense of energy and movement by drawing on diverse themes ranging from music to the environment.

# Untitled

4

- ▶ Canan Tolon
- ▶ Oil on canvas
- ▶ 2007
- ▶ City Hall Lobby

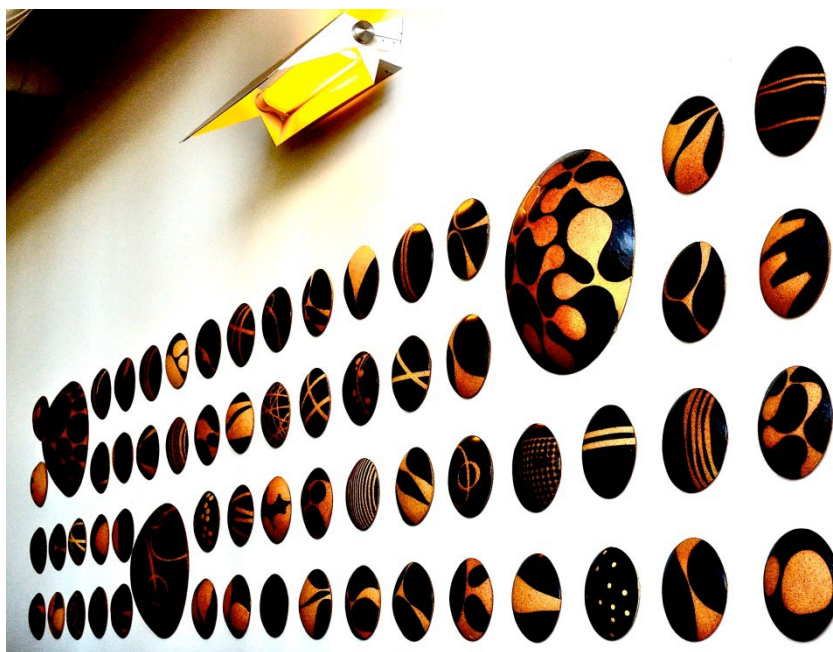


This exquisitely detailed oil on canvas presents an abstract layering of architectural forms and images. A practicing architect in the Bay Area for many years, Tolon eventually turned to the visual arts and has exhibited widely in the United States, France, England, and Turkey while continuing to live and work in Emeryville. This painting appears to have several dimensions, as the perspective is complicated by the overlays of several views, very much like the effect of a multiple exposure in photography. The artist herself views the work as an impossible landscape that defies reality, with the painting's resemblance to photographic images suspending it between reality and imagination and rendering it curiously unstable.

# Wall Buttons

5

- ▶ Cuong Ta
- ▶ Stoneware
- ▶ 2010
- ▶ City Hall
- ▶ <http://cuongta.com/>



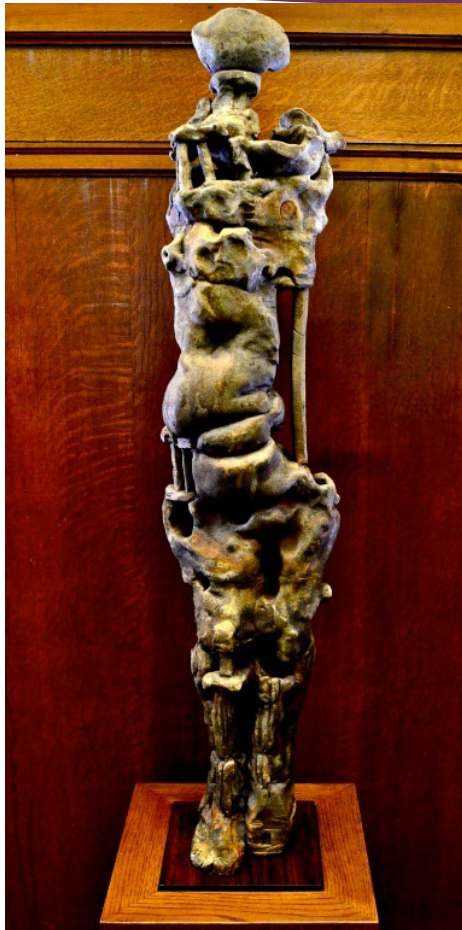
The "Wall Buttons" are made from stoneware slabs, with a combination of tape and liquid latex used as a resist in the glazing process. Mr. Ta has created a site-specific installation on the wall adjacent to the reception desk in City Hall. Their forms and patterns evolved from the artist's interest in the play of positive and negative space and his exploration of how individual pieces visually interact with one another when arranged both as an ordered grid and in a random grouping. Mr. Ta has been working in clay since 1998. His work has been exhibited extensively throughout the United States and is featured in numerous private and public collections. Mr. Ta is also a ceramic historian and Board member of the Association of Clay and Glass Artists of California.



# Figure with Columns

8

- ▶ William Schwob
- ▶ Wood fired clay
- ▶ 2011
- ▶ City Hall
- ▶ <http://williamschwob.com>



“Figure of Columns” can be viewed as a statement of humanity, a statement that reflects our fragility and attendant need for support. The artist’s recent clay work is inspired by a voyage to Japan and visits to some of that country’s major ceramic centers, where wood firing is the main process used to create ceramics. This sculpture was made as one piece, cut into three segments for firing, and then reassembled after firing. During firing, the ash bonds to the work’s surface and over many days of firing begins to collect a swell of pyroplastic glaze. The random interactions of the flames, the fuel sources, and the clays create unique and distinctive surfaces on each artwork.



# Urban Transformation

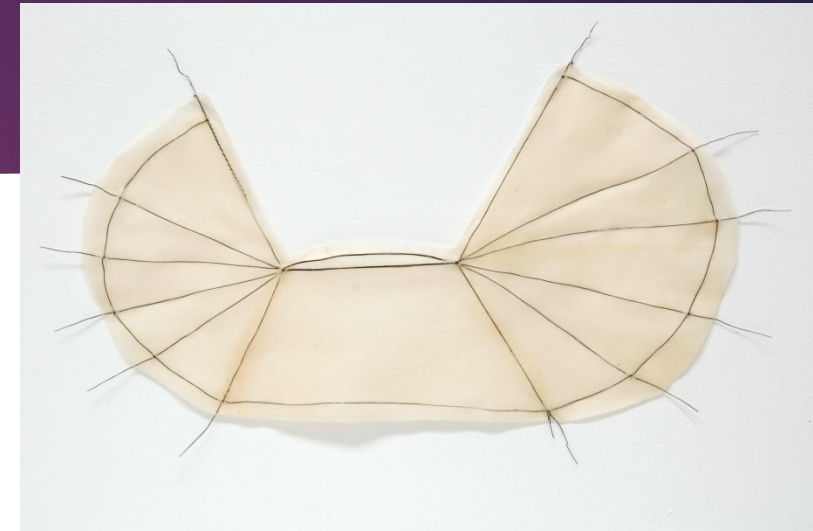
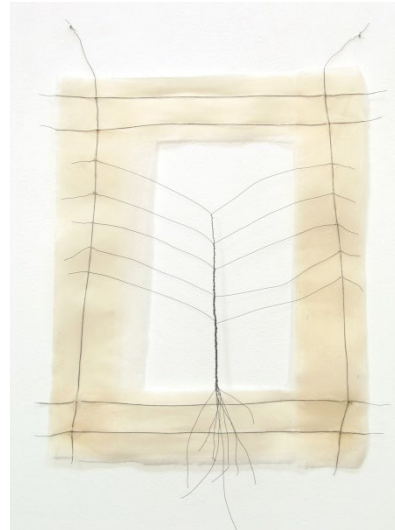
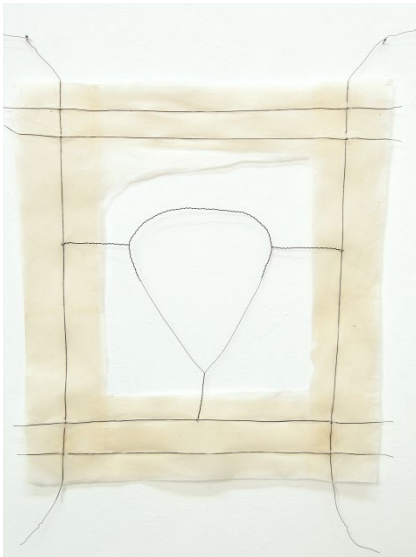
- ▶ Carl Hoard II
- ▶ 2012
- ▶ Aluminum, digital display, photography  
750 images
- ▶ 48" x 20" 3.5"
- ▶ City Hall – 1333  
Park Avenue,  
2<sup>nd</sup> Floor Atrium



“Urban Transformation” is a digital enlargement containing three digital photo frames playing over 700 unique images of urban graffiti. The “windows” that viewers look into represent the constant cycling of graffiti throughout the greater Bay Area.

# *Reach, Bulb and Entwine*

- ▶ Mari Andrews
- ▶ Mounted paper on wire
- ▶ 2008



- Emeryville Senior Center
- 4231 Salem St
- Stairwell landing



# Blue Triangles

<http://www.poshunleong.com/>

- ▶ Po Shun Leong
- ▶ Carved and dyed maple
- ▶ 2009
- ▶ Old City Hall – 1333 Park Avenue, 2nd Floor Council Chambers Atrium



# My Iconoclast

- ▶ Rik Ritchey
- ▶ 2014
- ▶ Acrylic on Polyurethane, 75"x56"
- ▶ City Hall – 1333 Park Ave 2<sup>nd</sup> Story Stairwell (exterior wall of a concrete elevator shaft)

Rik Ritchey graduated with an MFA from Mills in Oakland, CA. His a mixed media artist working in glass sculpture, painting, public sculptures, oil on carved wood paintings, "works" on paper, and monoprints.





# Blue Print of a Garden

- ▶ Nora Pauwels
- ▶ 2014
- ▶ Carborundum and Cobalt Ink on Plexiglas, 12" x 9", each panel, 12 panels
- ▶ Emeryville Police Station Second Story Welcome Atrium
- ▶ 2449 Powell St,



<http://www.norapauwels.com/>

NORA PAUWELS is an internationally recognized printmaker. Originally from Belgium, where she was educated in fine arts and fine art restoration she has made eth 45<sup>th</sup> Street Coop her home and studio.

# Dancing Hands

- ▶ Jeff Margolin
- ▶ Carved and burnished clay
- ▶ 2012
- ▶ Old City Hall – 1333 Park Avenue, 2nd Floor Council Chambers Atrium

The clay sculptures of Jeff Margolin convey a strong artistic message which is a product of astonishing and sensual aesthetics, and include fascinating philosophical statements.

Born in California, Jeff is a graduate of the University of California at Berkeley with a degree in political theory and economics. He has worked with clay for over forty years and his pieces, which are represented in fine art galleries throughout the country and overseas, receive the admiration and praises of collectors and critics alike.





# Valley Ford Ranch and Road

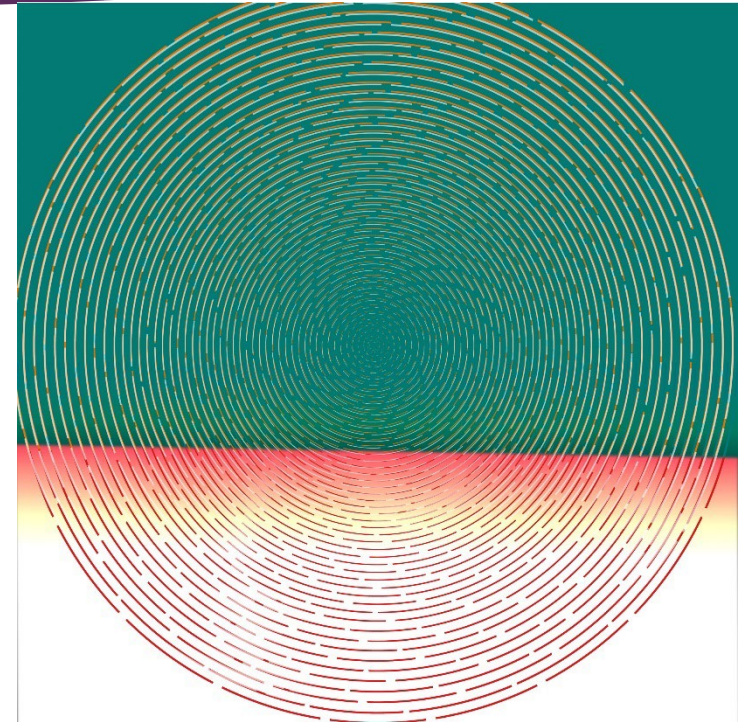
- ▶ Paul Oikawa
- ▶ Archival Screen Print on Cotton Paper
- ▶ 45.25" x 72.5" - Framed Size
- ▶ 32" x 60" - Image Size
- ▶ 2014
- ▶ Emeryville Senior Center
- ▶ 4231 Salem St
- ▶ Upstairs Multi-purpose Room



Paul Oikawa is an artist previously living in Emeryville, who works in digital photography, video, and traditional screen printing. These prints are all handmade and use archival materials and methods.

## *Location In Unknown Circle #3*

- ▶ Yuzo Nakano
- ▶ 2016
- ▶ Archival Pigment Print on Canvas
- ▶ Digital intaglio
- ▶ 38" x 38"
- ▶ Emeryville Senior Center
- ▶ 4231 Salem St
- ▶ Main stairwell





# *Chinese New Year 2017 Anxiety*

- ▶ John Wood
- ▶ 50"x50", mixed media on paper mounted on panel, finished with cold wax varnish
- ▶ 2017
- ▶ New City Hall – 1333 Park Avenue, 2nd Floor Atrium

<http://www.johnwoodart.com/>



# *Nostalgic Imprint: Camellia Path*

- ▶ Kazuko Watanabe
- ▶ A/P, 32"x40", multiple color etching on Japanese paper & cutting with scorch burning,
- ▶ 2013, purchase 2017
- ▶ Emeryville Senior Center, 4231 Salem St
- ▶ Billiard Room



<http://www.seagergray.com/Artist-Detail.cfm?ArtistsID=518>

<http://www.robertallenfineart.com/pgs/artist-reg/artist-reg-watanabe.html>

# *My Americans, Oakland, CA*

- ▶ Ralf Hillebrand
- ▶ 32"x44"
- ▶ Ink jet print
- ▶ 2014
- ▶ Purchase 2017

†





# Silhouette

- ▶ Sara Paloma
- ▶ 12 Hand formed black earthen ceramics
- ▶ City Hall Second Floor, North side of Elevator shaft, 1333 Park Av.
- ▶ <http://sarapaloma.com/index.html>



20

Raised in Southern California, Sara Paloma first worked with clay as a college requirement for an Art Education degree. Falling instantly in love with the medium, but too late to switch majors, she set up her own basement studio shortly after graduating from Cal State Long Beach in 1995.

After sharpening her craft in the off hours of jobs in animation and museums, Sara made the jump to full time studio potter in 2003 and began selling her distinctive line of stoneware vessels to galleries and design shops around the country. She moved from Los Angeles to the Bay Area in 2004, where she currently resides with her husband and their two small children. Drawing inspiration from architecture, geology, beach combing, ancient history, industrial design, and travel, Sara Paloma's iconic stoneware vessels are a study in monumental simplicity.

# *Dave, Myra, Betty and Ruth*

- ▶ Susan T Avila
- ▶ Embroider portraits on repurposed dyed fabric
- ▶ Senior Center 4231 Salem (2<sup>nd</sup> Floor Stair landing)



<https://arts.ucdavis.edu/faculty-profile/susan-taber-avila>

Dave, Myra, Betty and Ruth, 2019  
Hand Dyed and Repurposed Fabric with Embroidery, 26" x 26" each



# Stucked

- ▶ Prabin Badhia
- ▶ Oil on canvas
- ▶ City Hall 1333 Park Ave (1<sup>st</sup> Floor Stair landing)
- ▶ 2020
- ▶ "20"x 16"x 1"

At this point in my practice, I am involved in creating art that has subjects which are entangled with my current thoughts, energy, and time. I approach my piece with no regard for any pre-condition. Sometimes I have a lot of things to tell, in limited time, Or, I have little to say, with plenty of times. I enjoy the structure, the muscles, and movement, bending, twisting, and turning of the body forms.

My subject has always been primarily the human form. My figures are not historically based nor do they have a social context. They are purely form; they are without telling of where they are from and why there are there, and when they are. The ideology behind this is neither constructive nor destructive. It's just as it is.





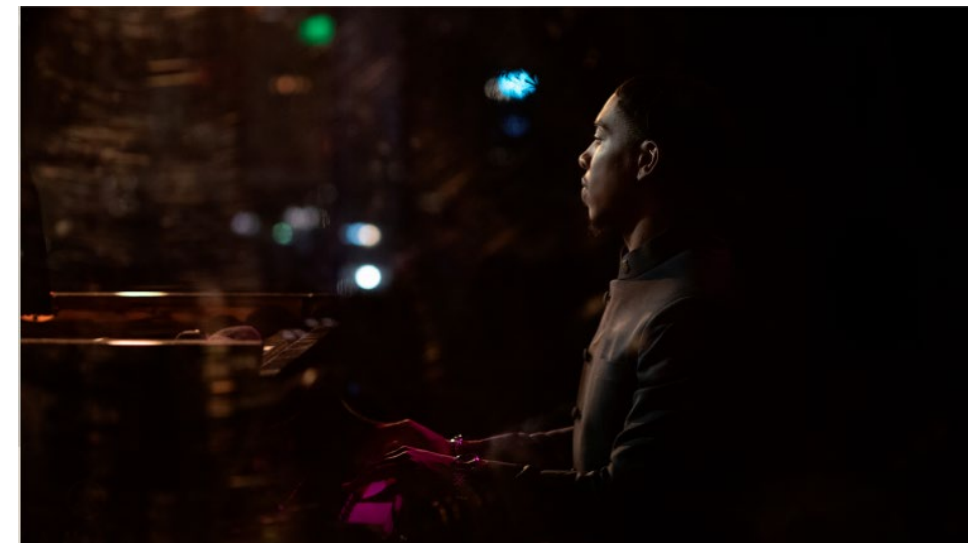
# Christian Sands and Rueben Rogers

23

- ▶ Ronald Davis
- ▶ Digital Photography
- ▶ City Hall 1333 Park Ave (1<sup>st</sup> Floor and Second Floor )
- ▶ 2019 , purchased 2021
- ▶ 30"x 30" and 26" by 36"
- ▶ <https://www.davisdigitaldesign.com/>



Davis writes this about his photography of musicians and the year 2020: "Live music is there anything like it? The groove, the space, the feeling. I miss the music." Davis operates Davis Digital Design, a boutique Communications Agency specializing in: branding, identity, communications, new media, graphic/production design, advertising and corporate photography and video.



# Ant, Mosquito, Grasshopper , and Stag Beetle

24

- ▶ Ken Kalman
- ▶ Copper sheet and rivets
- ▶ Location is to be determined
- ▶ 2022
- ▶ 10"to 24" long, 12" to 36" wide, and 4" to 46" high
- ▶ <http://www.kenkalman.com/>



Kalman is a Detroit native who studied and worked in Boston and Albuquerque before settling in the Bay Area more than 20 years ago. He holds an M.F.A. from the San Francisco Art Institute and a bachelor's degree from the University of New Mexico.

His Metal sculptures are shaped from aluminum or copper plate with hand-cast details. Kalman's artworks can be found in galleries as well as in private and corporate collections across the country including the Nestle Corporation, the Milwaukee Bucks, Tiffany & Company, and the US Department of State in Washington, DC.