

Flora and Fauna

4 Locations:



Flora & Fauna

Hollis at 63rd



Flora & Fauna

40th Street at Emeryville



Flora & Fauna

Shellmound at Marriott, Emeryville, CA





FLORA AND FAUNA PHASE I

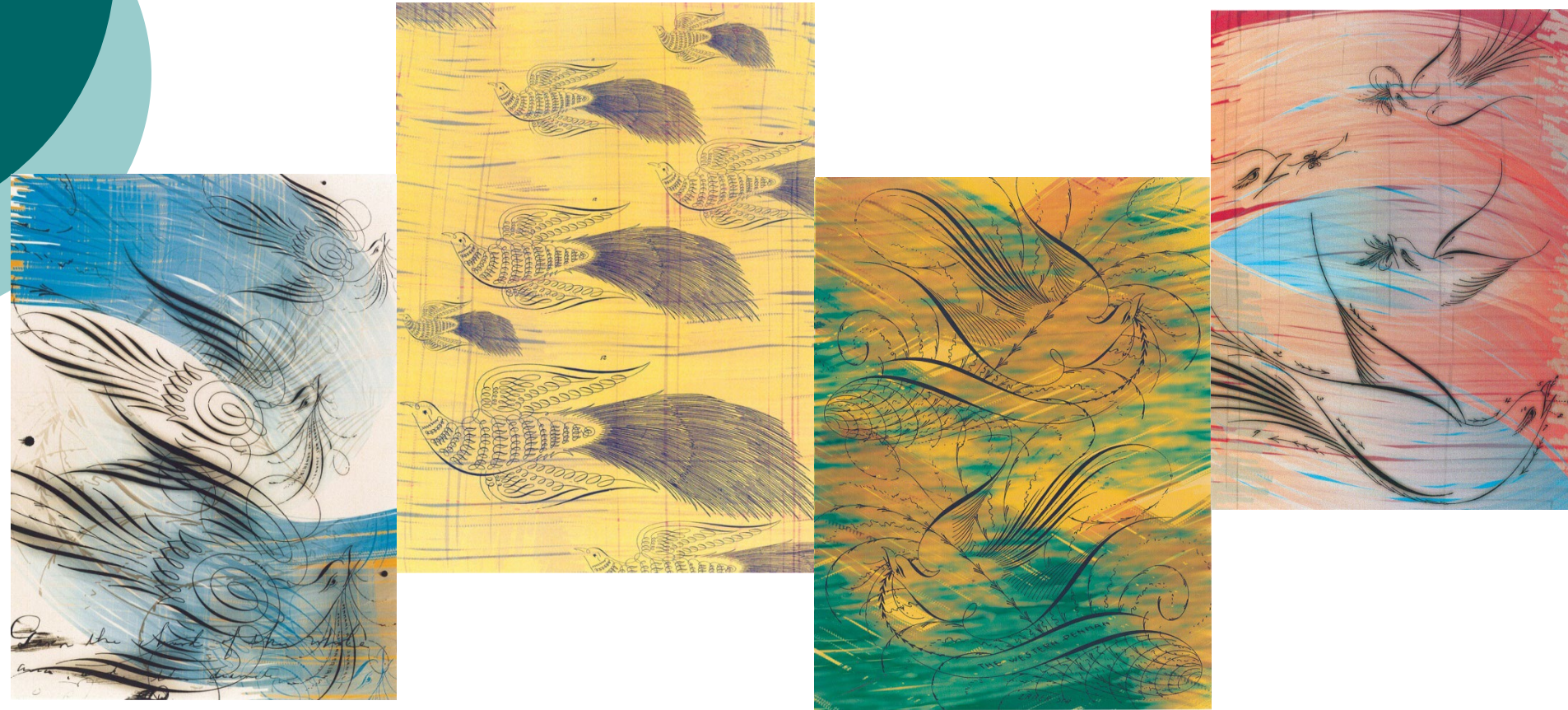
Flora and Fauna – Nora Pauwels

October 2009 – January 2010 - Phase I



Flora and Fauna – Catherine Courtenaye

February 2010 – May 2010



Flora and Fauna* – David D'Andrea

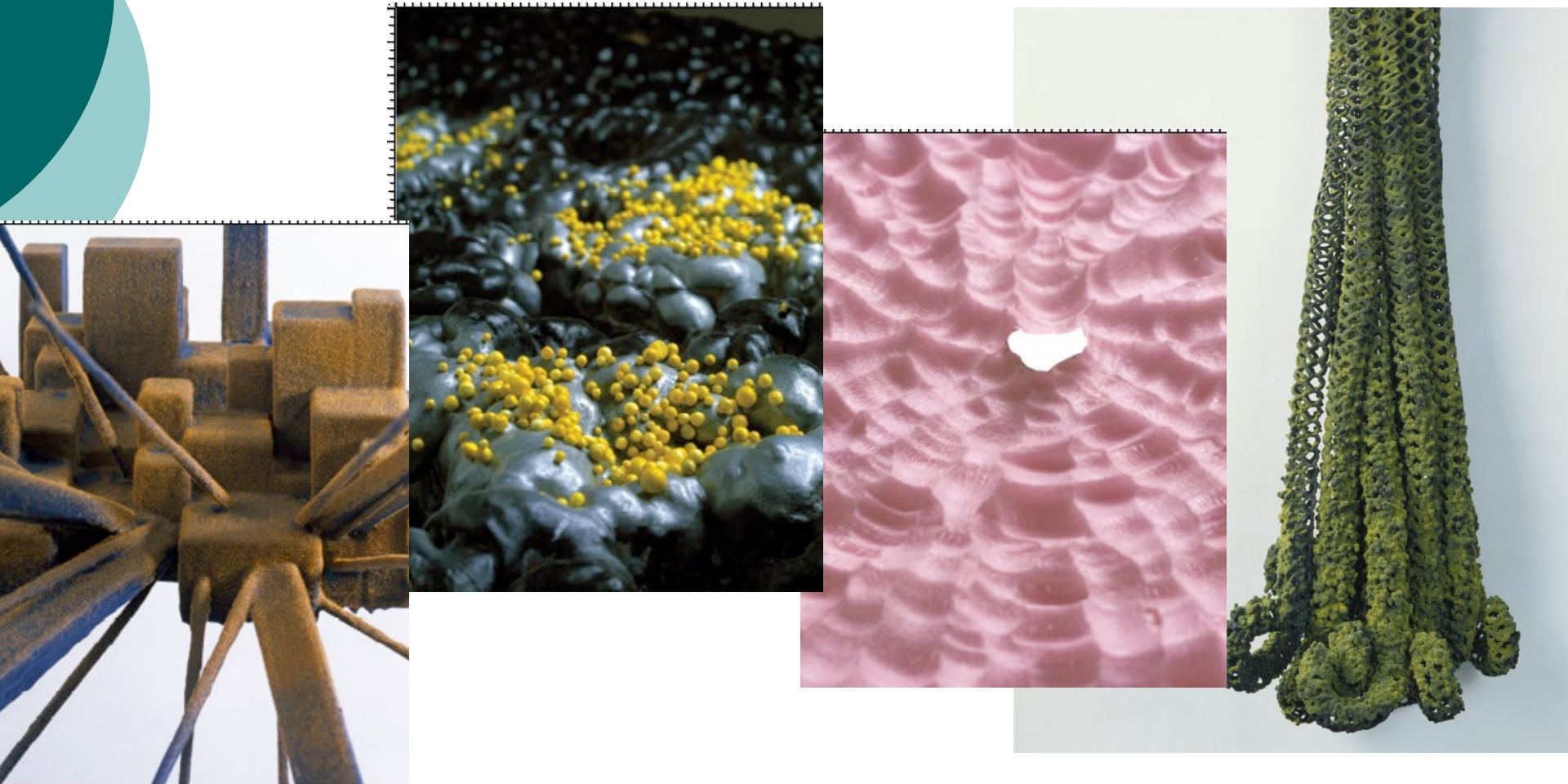
June 2010 – September 2010



*Three images installed at the Senior Center in 2017

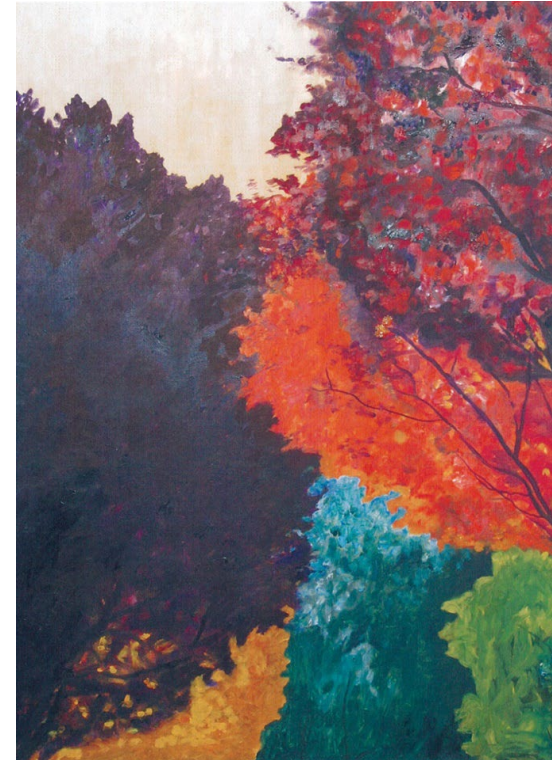
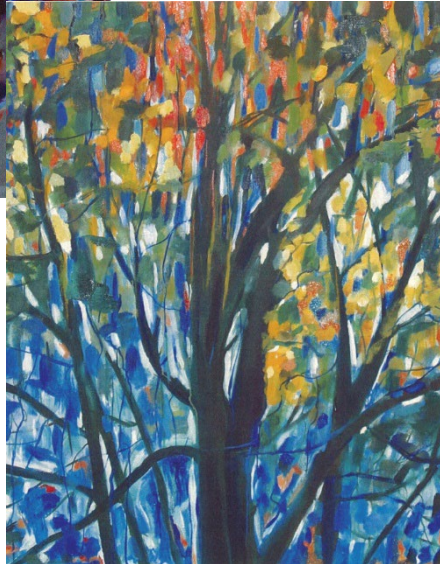
Flora and Fauna – Robert Ortbal

October 2010 – January 2011



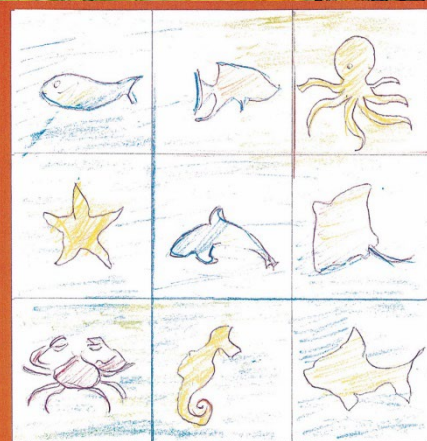
Flora and Fauna – Lenore McDonald

February 2011 – May 2011

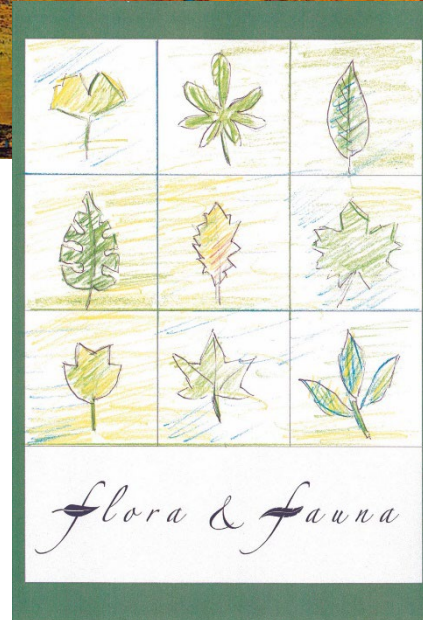


Flora and Fauna – Dean Hunsaker

June 2011 – September 2011



flora & fauna



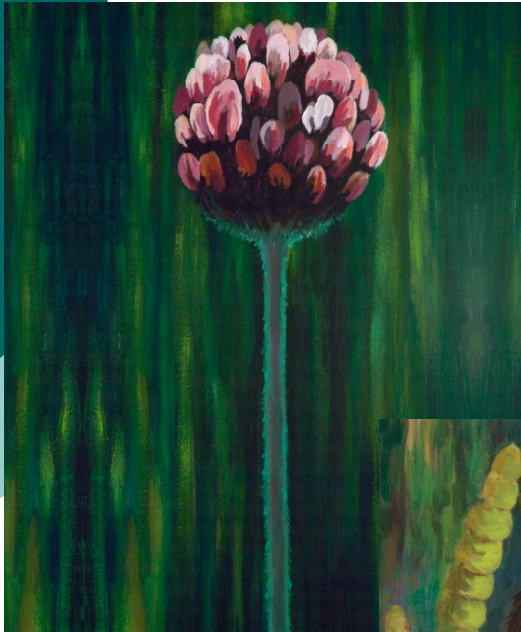
Flora and Fauna – Kevin Twomey

October 2011 – January 2012



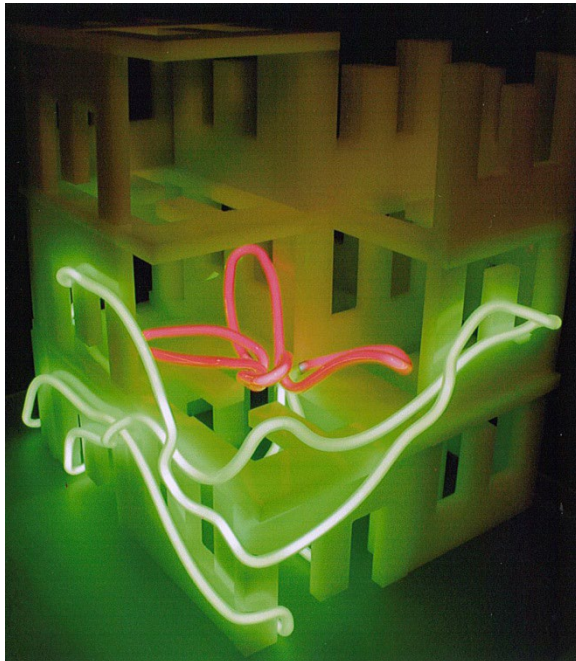
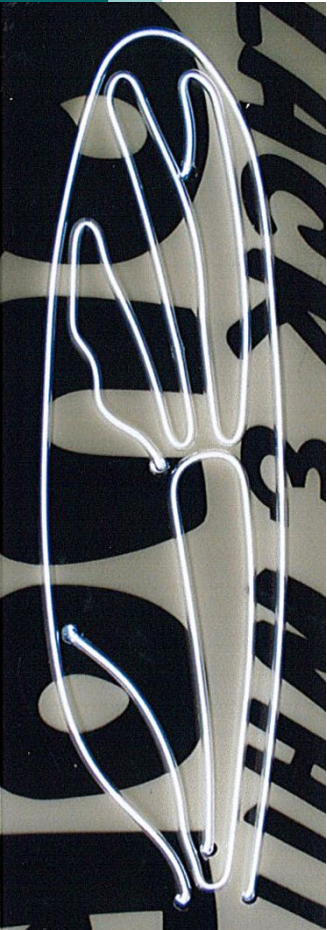
Flora and Fauna – Laura Anderson

February 2012 –May 2012



Flora and Fauna – Shawna Peterson

June 2012 – September 2012






FLORA AND FAUNA PHASE II


INDUSTRIAL CONCRETE
PLATFORMS REPLACED
BY VERDANT BOOSTERS
DEVELOPED BY GRASS
SPINNING DOWN
ALONG THE RAILS

VAN
ETCHED LINES GUIDE
MIRROR LIKE PUDDLES
ON A CONCRETE PAD
REPURPOSED
A TINY RESERVOIR
FOR WILD GEESE

LITTLE
GREEN JUMPERS
INVISIBLE PRESENCE
MEASURED BY
SYMPHONIC CROAKING
IN THE MUD FLATS
AS WE SLUMBER

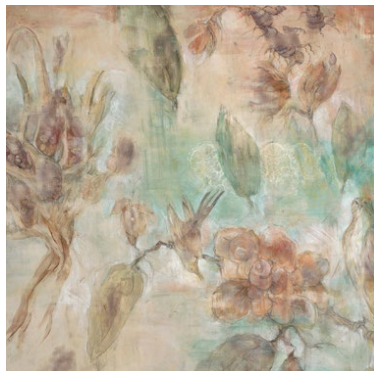


SOLITARY SANDPIPER
SCUTTLES LEFTWARD
MOVING AT A PACE
OF A WINDUP TOY
HIGH PITCH PEEPER
PROTECTING ITS YOUNG

A stylized illustration of a Solitary Sandpiper bird. The bird is shown in profile, facing left. It has a long, straight, light-colored beak. Its body is covered in mottled green and yellow patterns, with a lighter, speckled underbelly. It has long, thin legs and a small, dark eye. The bird is standing on a plain white background.

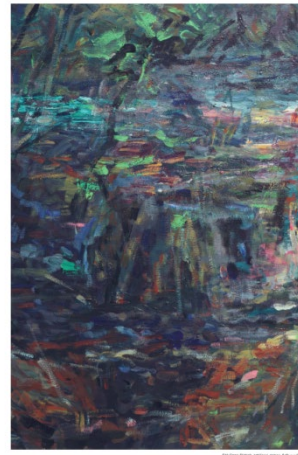
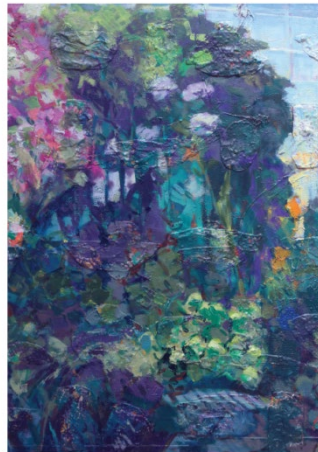
Flora and Fauna – Ann Hollsbery

March - June 2013



Flora and Fauna – Foad Satterfield

July - October 2013



His experiential journey of becoming a professional artist began in 1973, when he committed to painting and established a studio in Emeryville. It was through solo endeavors in a personal work space that he learned that making paintings is an ever-unfolding and expansive process; one that offers infinite possibilities for self-expression and limitless visual inventions. Throughout the years, he have explored and incorporated ontological issues in his works and have been particularly drawn to the profundity and spiritual qualities of nature. He finds that by just being still, quietly absorbing what I see, and looking lovingly into what is real, exquisite patterns and relationships of textures, colors, shapes, and planes jump out at me. It is in those moments that the substrate of nature's delicate and complex interconnectivity begins to be revealed.

Flora and Fauna – Yvette Buiges

November 2013 - February 2014



White cat, green, red, blue, 2013



Two birds, red, orange, 2013



Two birds, blue, yellow, 2013



Two birds, yellow, green, 2013

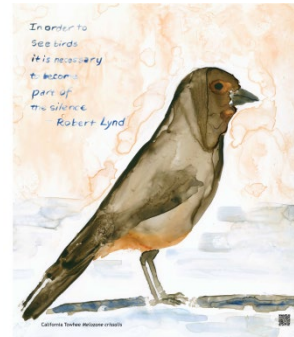
Phase II - 2014

Flora and Fauna – Michelle Theberg



THE CITY OF EMERYVILLE ART IN PUBLIC PLACES PROGRAM

Emeryville is a city of artists and art lovers. The City of Emeryville Art in Public Places Program is a commitment to the community to provide a high quality public art program. The program is designed to enhance the visual environment and provide a sense of place and identity for the community. The program is a commitment to the community to provide a high quality public art program. The program is designed to enhance the visual environment and provide a sense of place and identity for the community. The program is a commitment to the community to provide a high quality public art program. The program is designed to enhance the visual environment and provide a sense of place and identity for the community.



THE CITY OF EMERYVILLE ART IN PUBLIC PLACES PROGRAM

Emeryville is a city of artists and art lovers. The City of Emeryville Art in Public Places Program is a commitment to the community to provide a high quality public art program. The program is designed to enhance the visual environment and provide a sense of place and identity for the community. The program is a commitment to the community to provide a high quality public art program. The program is designed to enhance the visual environment and provide a sense of place and identity for the community. The program is a commitment to the community to provide a high quality public art program. The program is designed to enhance the visual environment and provide a sense of place and identity for the community.



THE CITY OF EMERYVILLE ART IN PUBLIC PLACES PROGRAM

Emeryville is a city of artists and art lovers. The City of Emeryville Art in Public Places Program is a commitment to the community to provide a high quality public art program. The program is designed to enhance the visual environment and provide a sense of place and identity for the community. The program is a commitment to the community to provide a high quality public art program. The program is designed to enhance the visual environment and provide a sense of place and identity for the community. The program is a commitment to the community to provide a high quality public art program. The program is designed to enhance the visual environment and provide a sense of place and identity for the community.



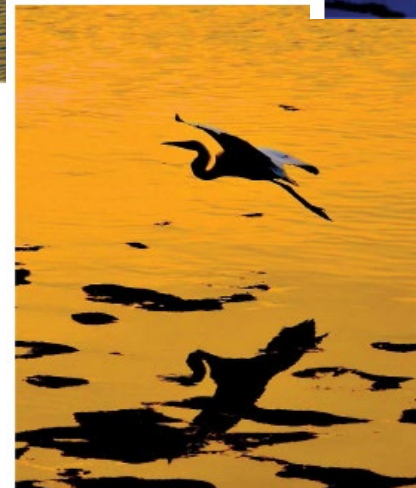
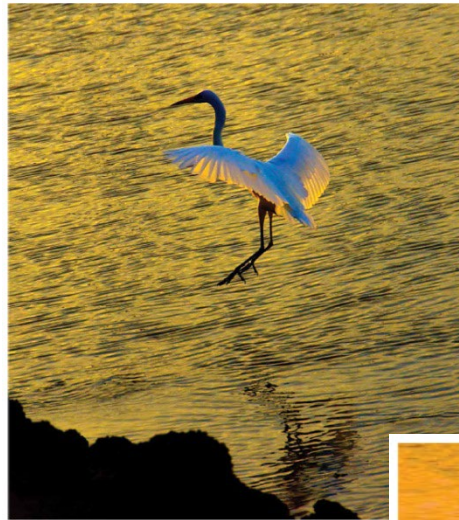
THE CITY OF EMERYVILLE ART IN PUBLIC PLACES PROGRAM

Emeryville is a city of artists and art lovers. The City of Emeryville Art in Public Places Program is a commitment to the community to provide a high quality public art program. The program is designed to enhance the visual environment and provide a sense of place and identity for the community. The program is a commitment to the community to provide a high quality public art program. The program is designed to enhance the visual environment and provide a sense of place and identity for the community. The program is a commitment to the community to provide a high quality public art program. The program is designed to enhance the visual environment and provide a sense of place and identity for the community.

<http://heavyblackline.com/paintings.php>

Flora and Fauna – Nick Sebastian

July - October 2014



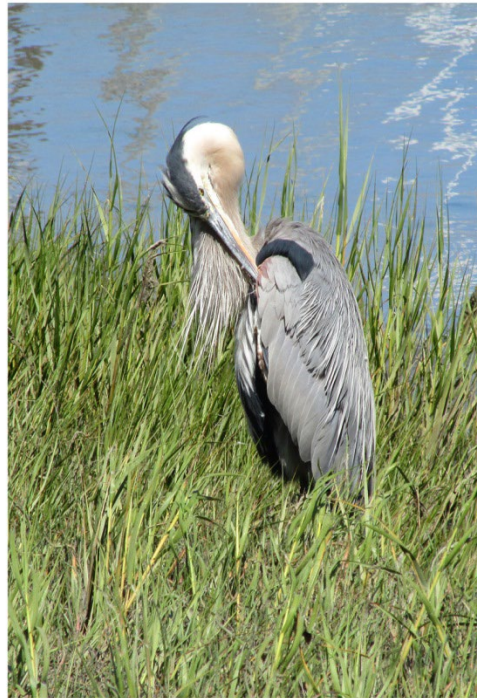
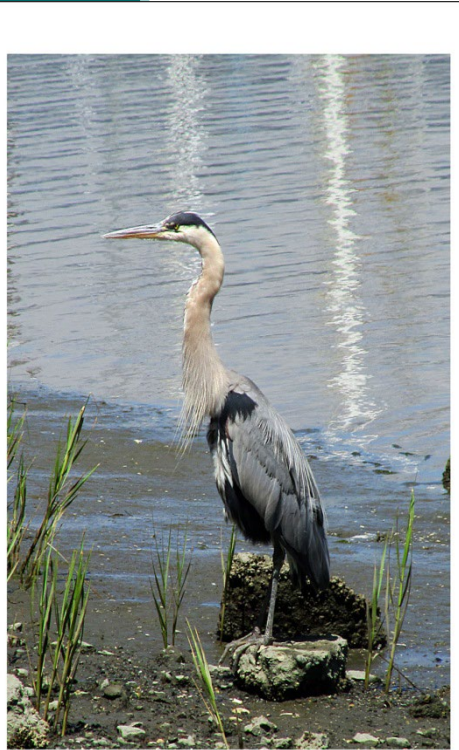
<http://www.nhsebasphotos.com/>



FLORA AND FAUNA PHASE III

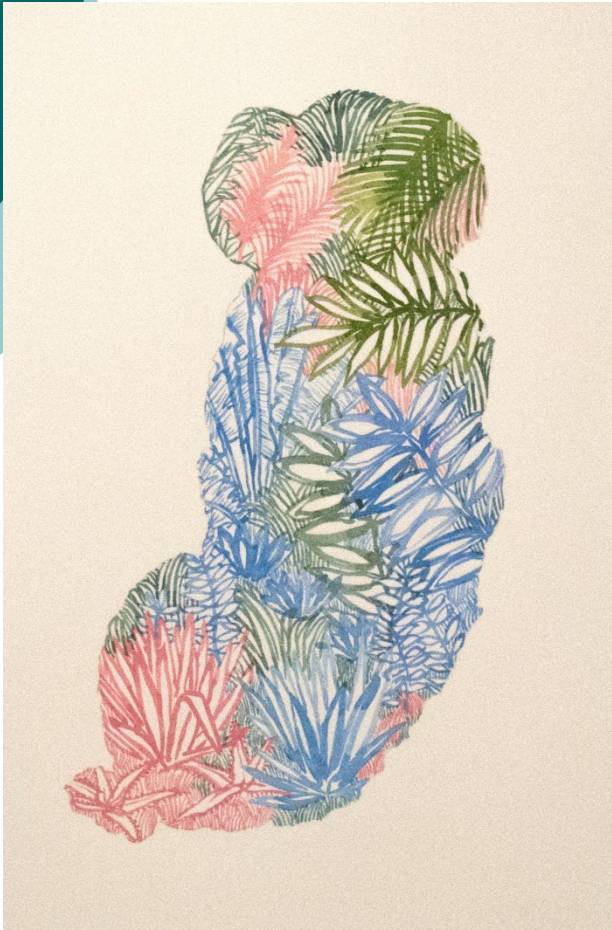
Flora and Fauna - Will Tait

January - April 2015



Flora and Fauna - Moonyoung Sung

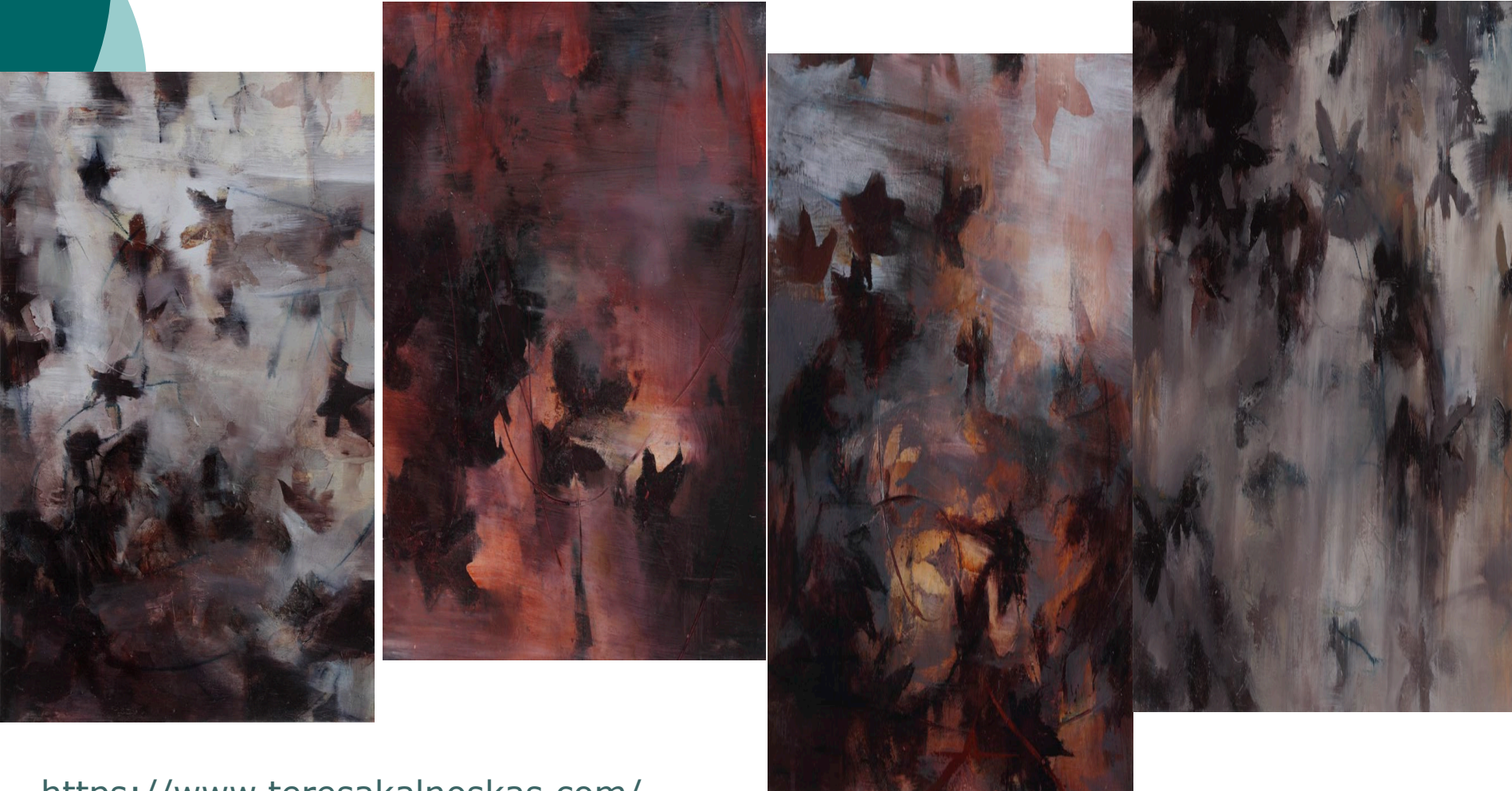
May - August 2015



<http://moonyoungsung.com/home.html>

Flora and Fauna - Teresa Kalnoskas

September - December 2015



<https://www.teresakalnoskas.com/>

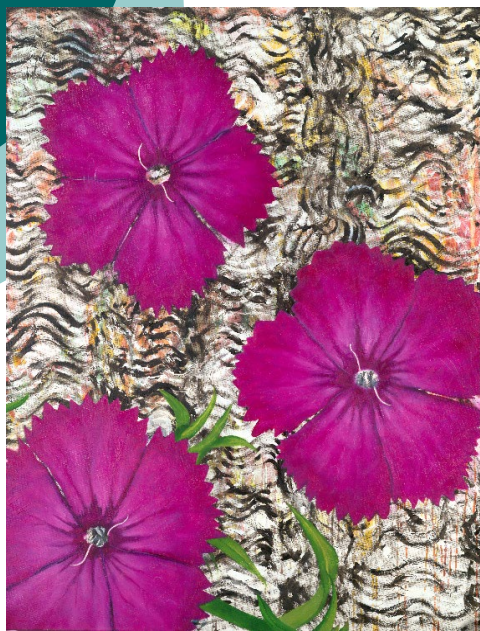
Flora and Fauna – Kazuko Watanabe

January - April 2016



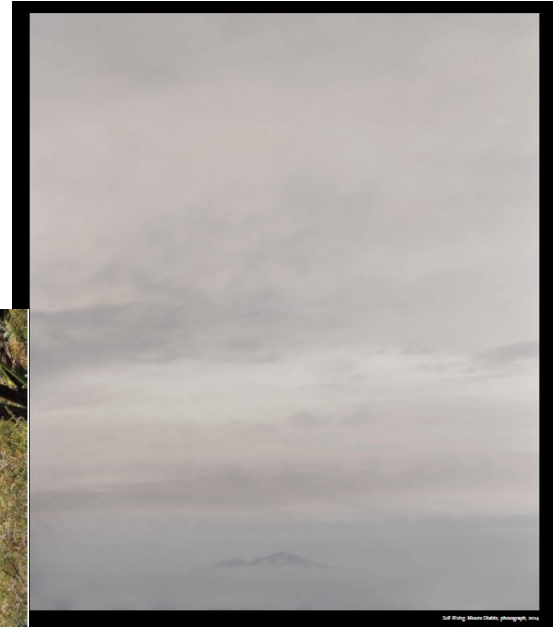
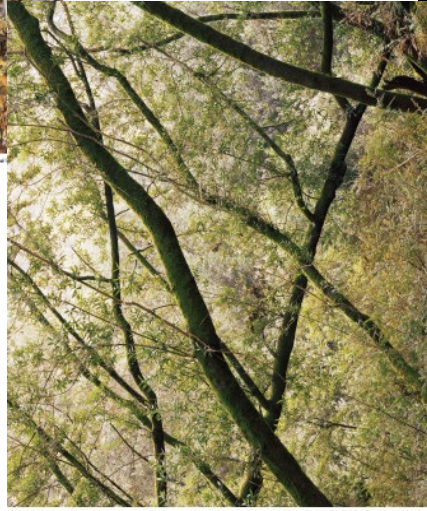
Flora and Fauna – Caitlin Coresis

May - August 2016



Flora and Fauna – Hanna Nelson

September - December 2015



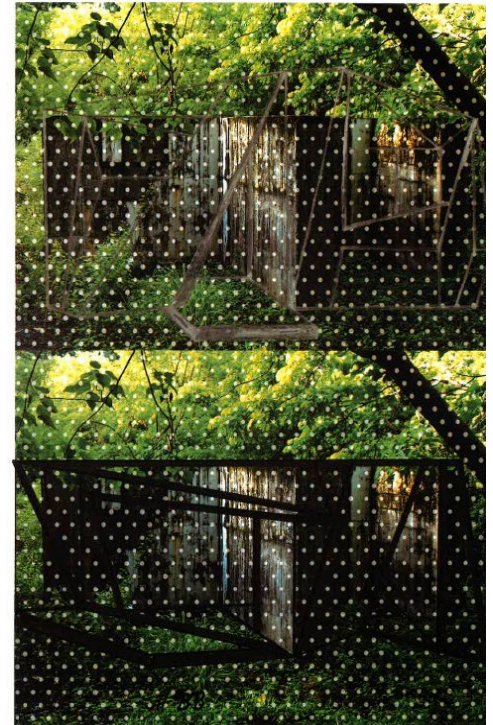
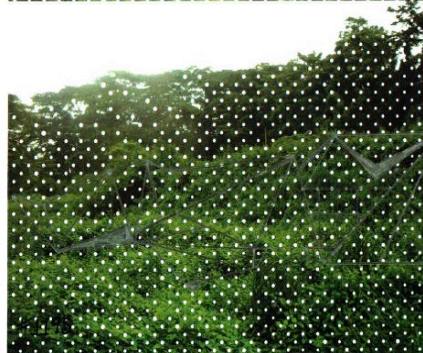
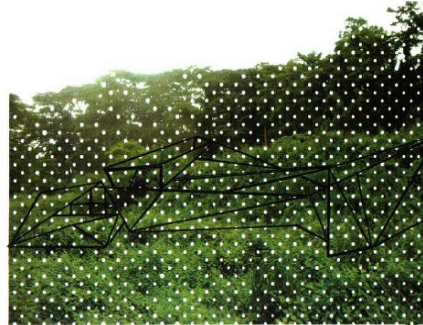
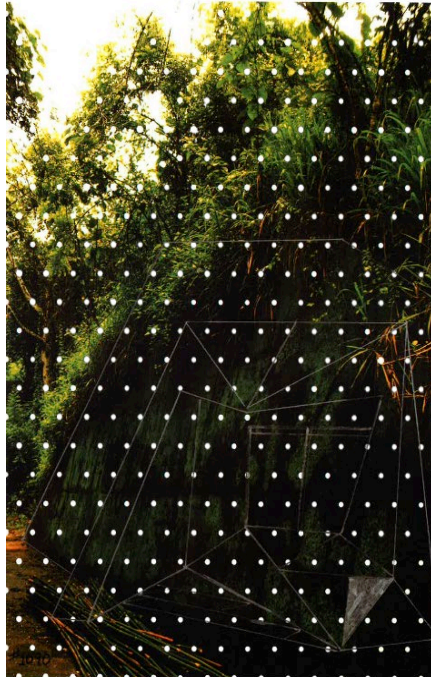
<http://www.hannaholivianelson.com/>



FLORA AND FAUNA PHASE IV

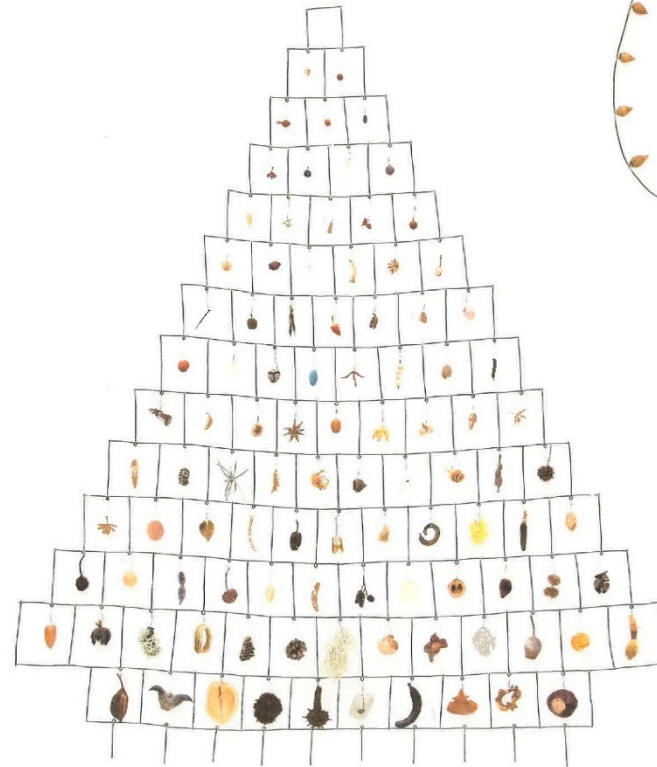
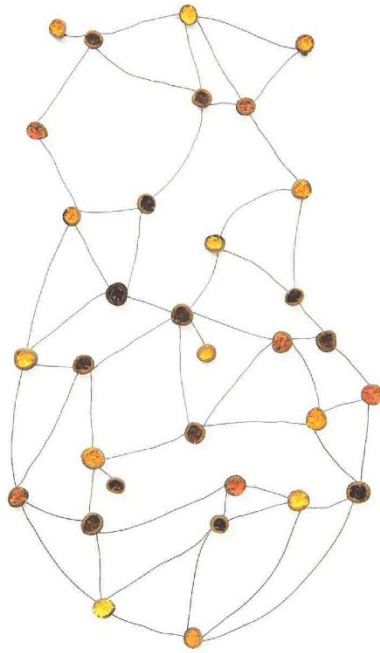
Flora and Fauna – Kevin Wickham & Ernest Small

January - April 2017



Flora and Fauna – Mari Andrews

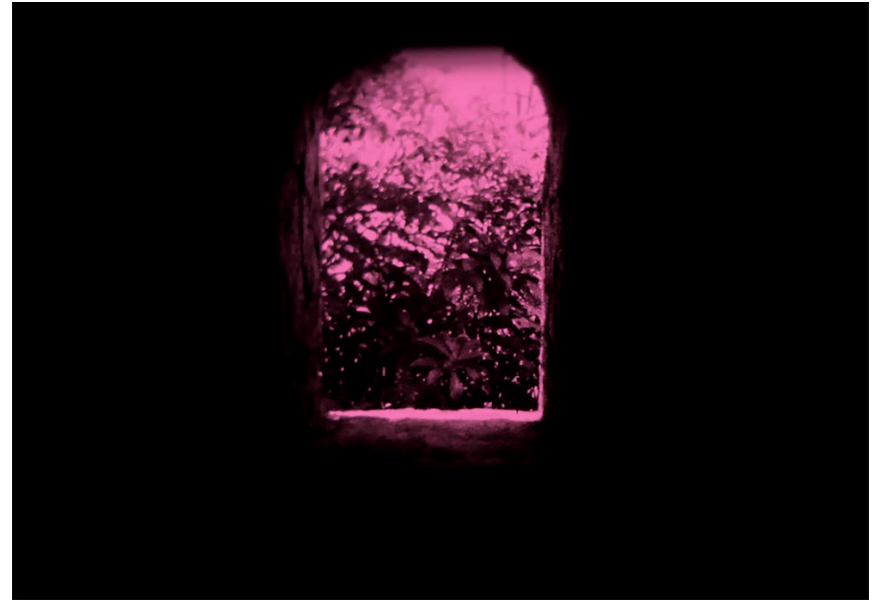
May - August 2017



Andrews #1

Flora and Fauna – Sofia Cordova

September - December 2017



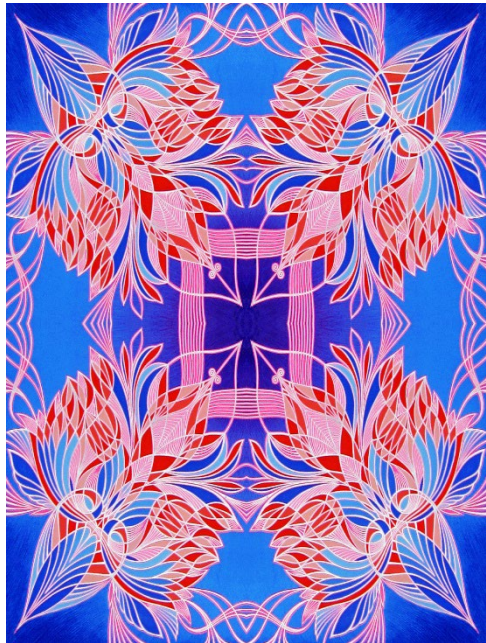
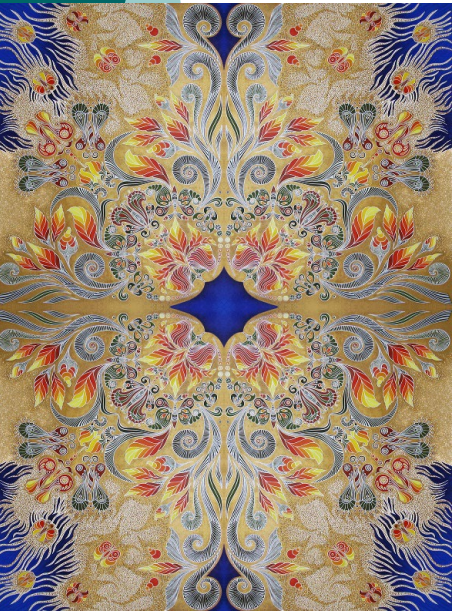
Flora and Fauna – Heather Deyling

January – April 2018



Flora and Fauna –Tatiana Mak

May – August 2018



Flora and Fauna– Joseph Kosdrosky

September –December 2018

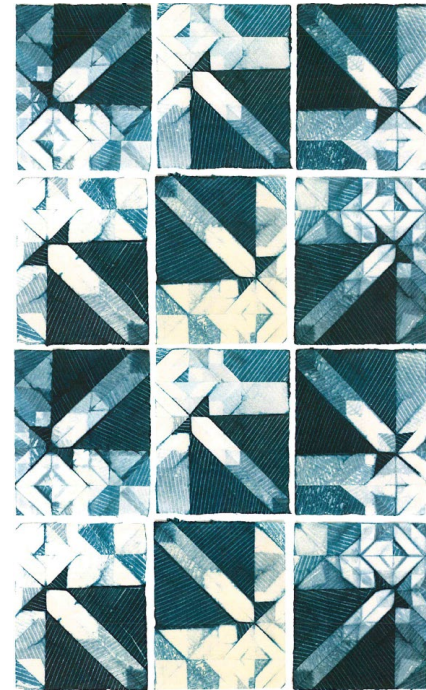
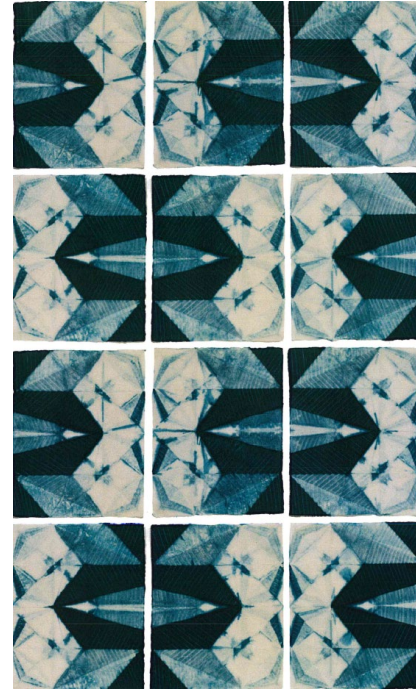
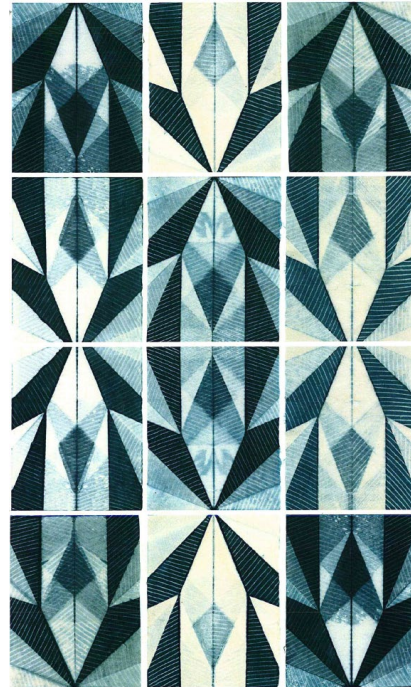
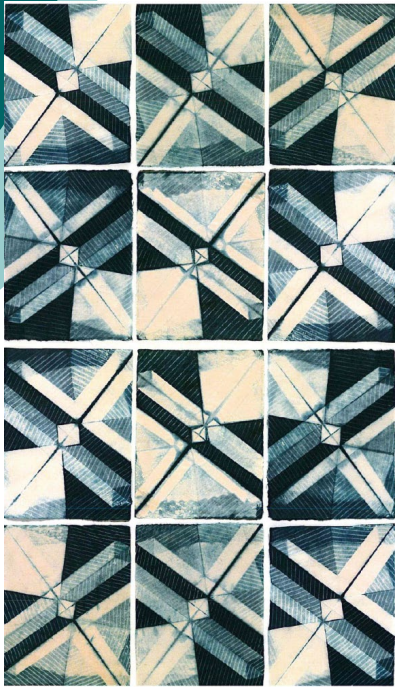




FLORA AND FAUNA PHASE V

Flora and Fauna – Ana Lisa Hedstrom

January – April 2019



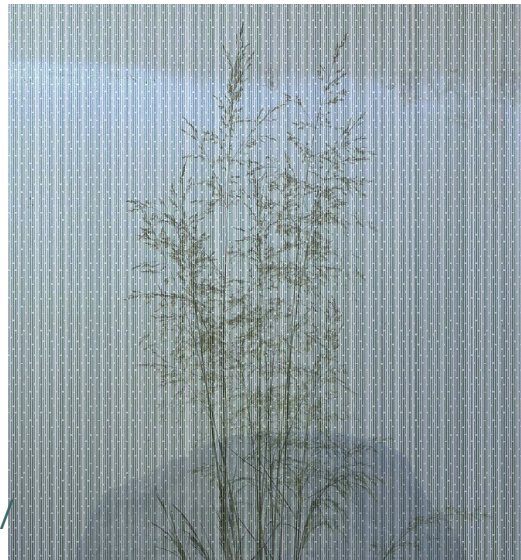
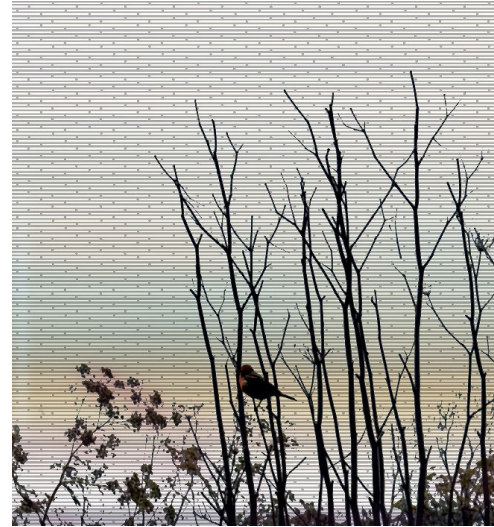
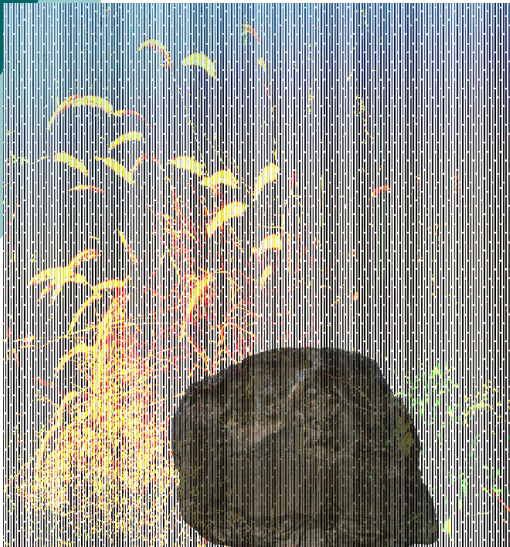
Flora and Fauna – Ann Holsberry

May - August 2019



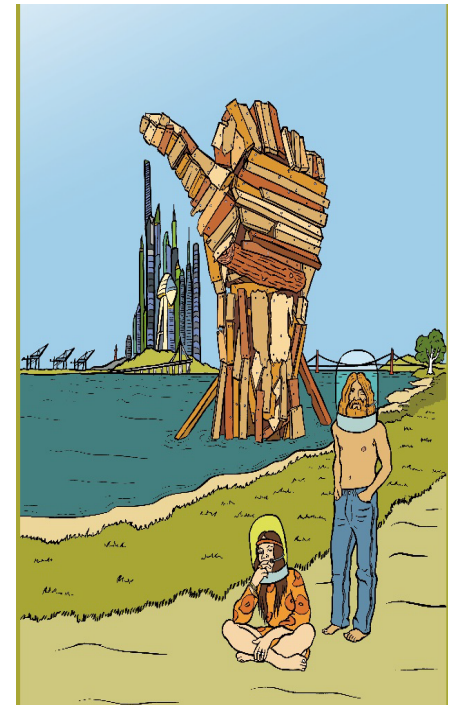
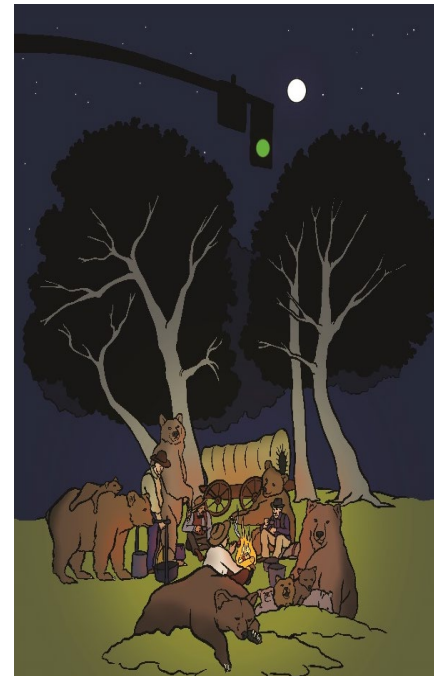
Flora and Fauna – Yuzo Nakano

September – December 2019



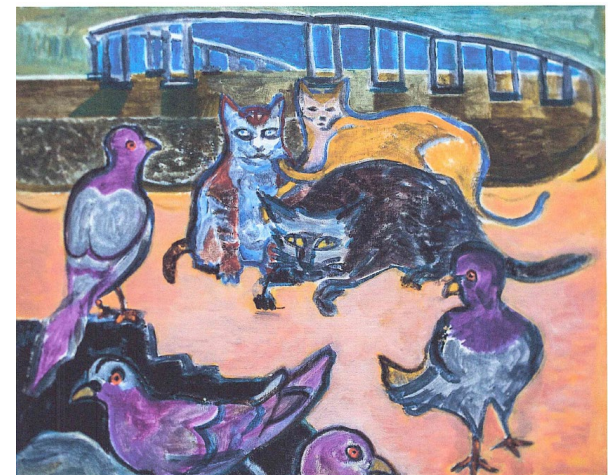
Flora and Fauna – Packard Jennings

January – April 2020



Flora and Fauna – Steve Skaar

May - August 2020



Flora and Fauna – Priscilla Birge

September - December 2020





FERTILE GROUND PHASE VI

Fertile Ground – Archana Horsting

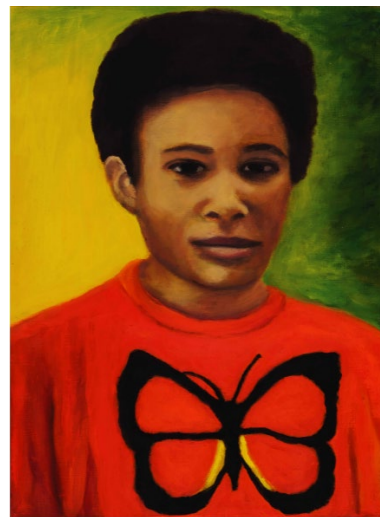
January – April 2021



<https://www.archanahorsting.com/>

Fertile Ground – Lenore McDonald

May – August 2021



Fertile Ground – Kazuko Watnabe

September – December 2021



<https://www.kazwat.com/>

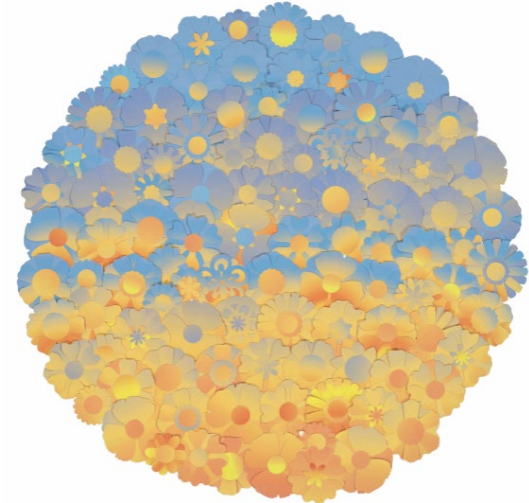
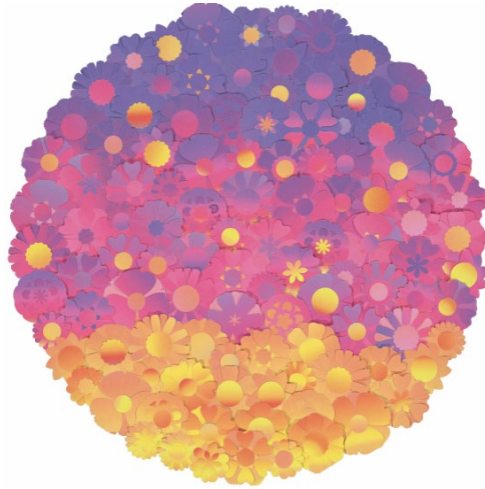
Fertile Ground – Joey Rose

January – April 2022



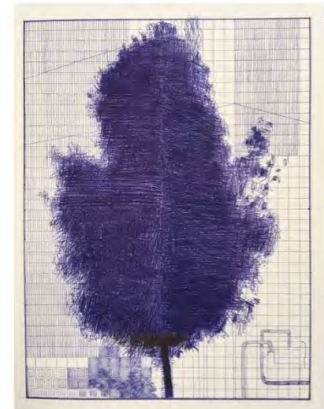
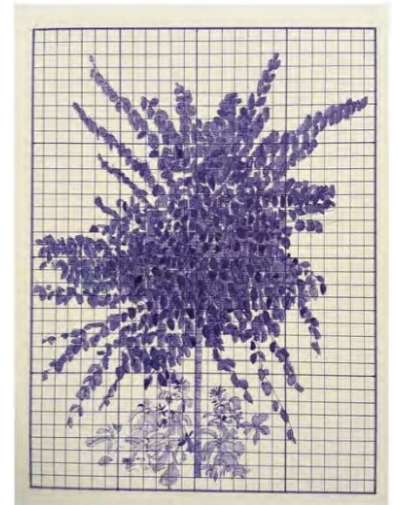
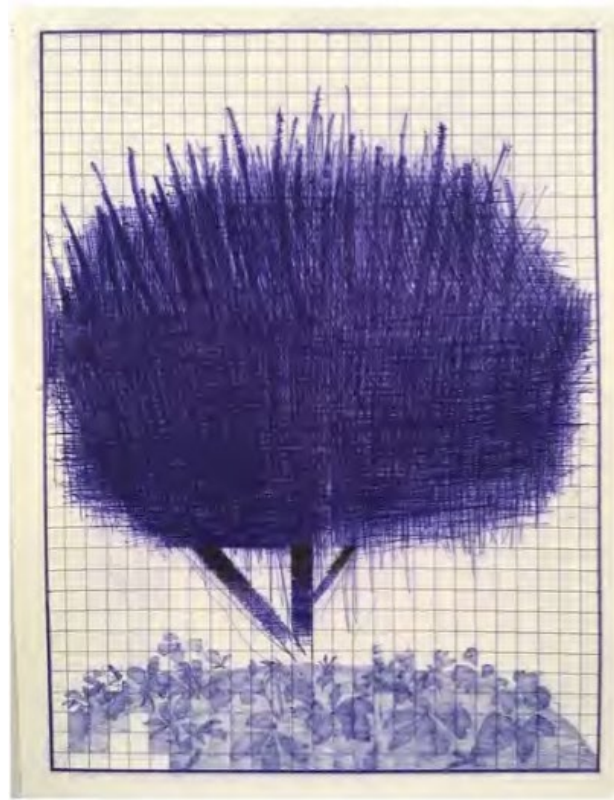
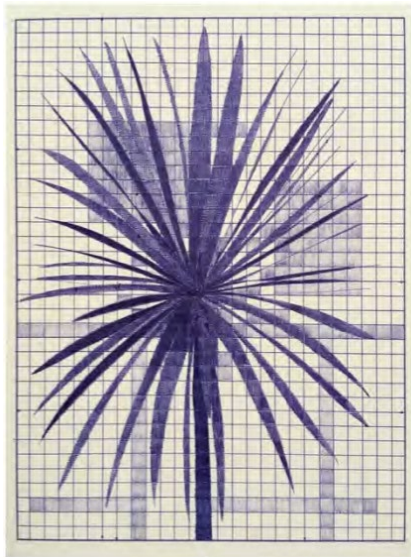
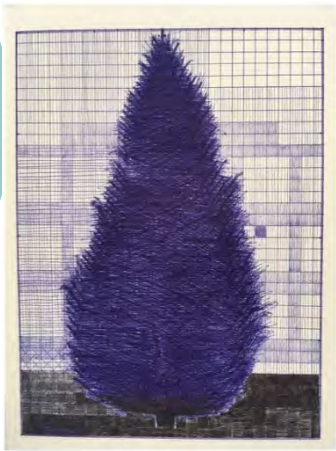
Fertile Ground – Jess Aaland

May – August 2022



Fertile Ground – Nora Pauwels

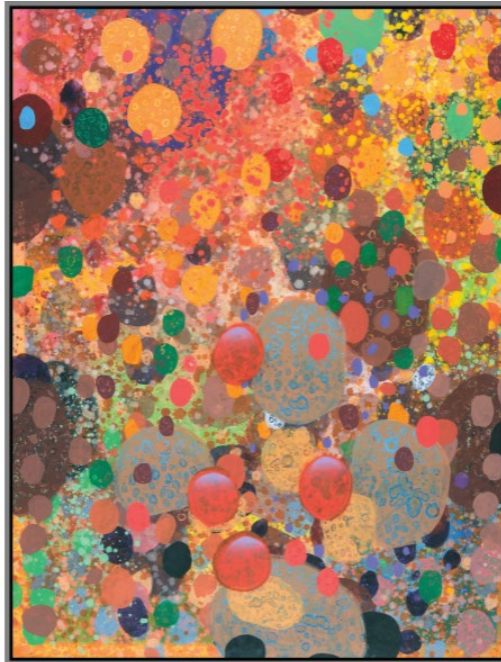
September –December 2022



<https://www.norapauwels.com/>

Fertile Ground – Michael Murphy

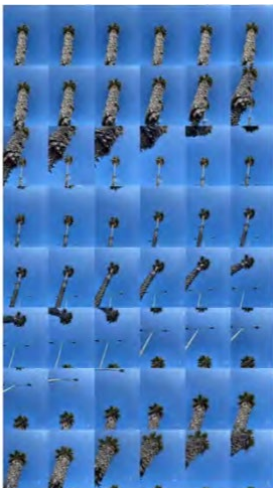
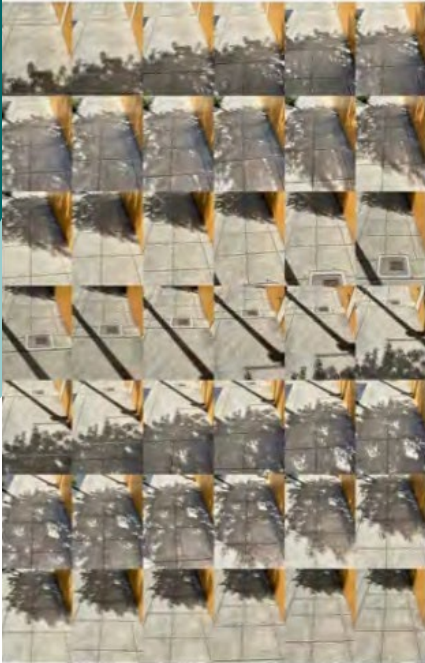
January – April 2023



<https://photos.google.com/share/AF1QipPMEnsaigPAEM0TKqcAfrEGSBAaPz9XXC2C26UMPDRwRmWvextgUb5TVJKw2Gqkrw?key=aE9KcFpfU0gxUzlmaVFXeXdJSWk1Y2RkMlpHb3Rn>

Fertile Ground – Courtney Sennish

May – August 2023



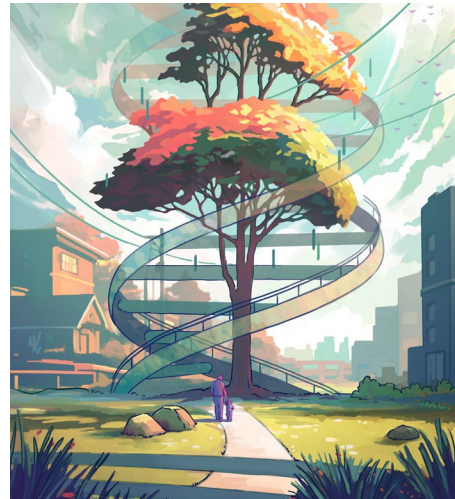
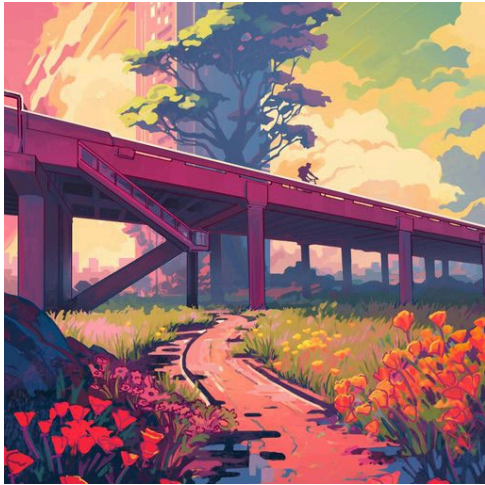
<https://www.courtneysennish.com/>



FERTILE GROUND PHASE VII

Fertile Ground - Naomi Van Doren

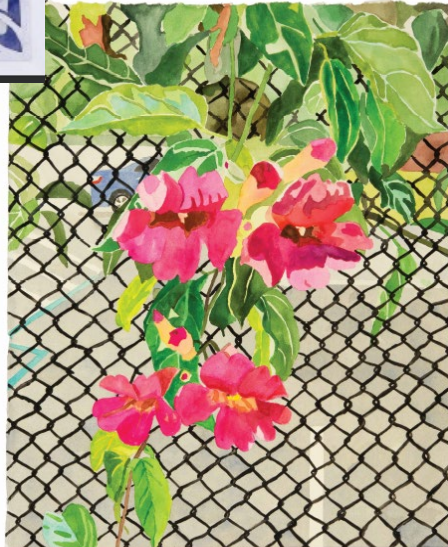
September – December 2023



<https://www.naomivandoren.com/>

Fertile Ground – Lisa Rock

January – April 2024



Fertile Ground – Greg Vion

May – August 2024



Fertile Ground – Jess Cook

September – December 2024



<https://jessicacook.com/>



Fertile Ground – Erin Fong

January – April 2025



Fertile Ground – Michelle Theberg

May – August 2025



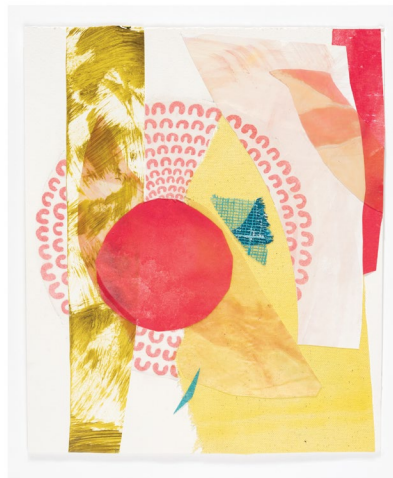
canvas, acrylic, gouache



Wood
acrylic, canvas, paper, gouache on paper
2023
11.875 x 10 in (30 x 25 cm)



Lace Meets Lichen in the Field of Play
lichen, lace doily, acrylic, watercolor on paper
2023
9.84 x 12 in (25 x 30.5 cm)



New World, Disorderly
acrylic, canvas, and watercolor on paper
2023
12 x 10 in (30.5 x 25.4 cm)



Paraf
acrylic, gouache, turquoise paint,
watercolor on paper
2021
12 x 10 in (30.5 x 25 cm)



Juncos potans
acrylic on yupo, pellon and fabric, Juncos potans on paper
2023
10 x 8 in (25.2 x 20.5 cm)